



## SBE Manual V7.5

Start | **Queues** | Data Folders | Archive | Setup | Submit  
Associated Files | Other Add-ons | Related Batch Processes | Special Forms

### Queue Setup

- ▶ What is a Queue
- ▶ Create a Queue
- ▶ Delete a Queue
- ▣ Queue Properties
  - ▶ General
  - ▶ **Processing**
  - ▶ Filters
  - ▶ Print
  - ▶ Email
  - ▶ Fax
  - ▶ File
  - ▶ Applications
- ▶ Print to ANY Windows Printer
- ▶ Tools

#### Queue Properties

Select the queue to change by highlighting it. Update the queue settings in the Properties Bar on the right side of the FTSpooler Window.

[Top](#)

#### Processing Tab

Select a rule file for the queue under the **Resolve** list if multiple document types are processed by this queue or the input file needs to be split into individual document files. Leave as **No rules (resolved)** if this queue processes without rules.

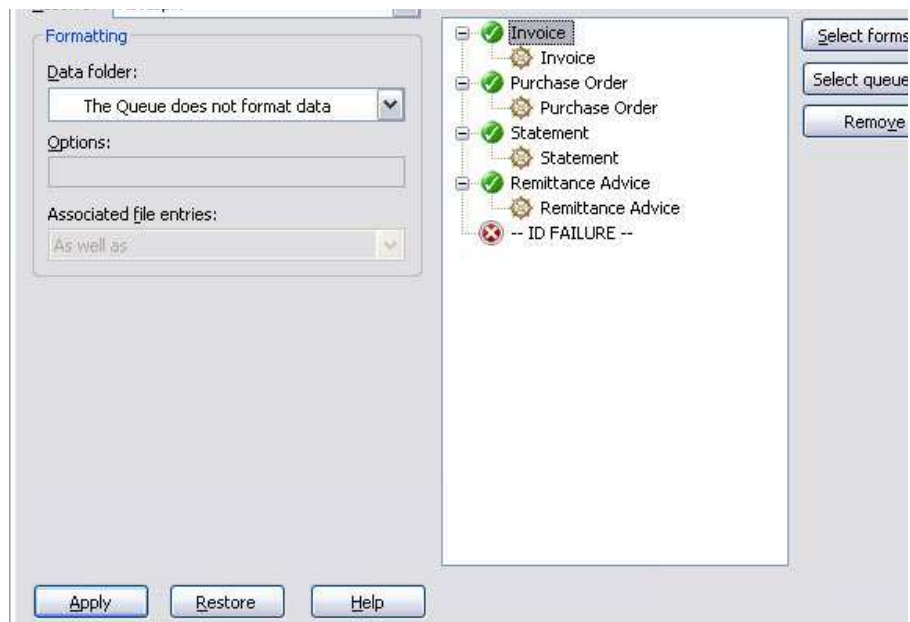
Then select the data file from **Data folder** list.

For **No rules (resolved)**:

- To select a form, click on the **Select forms** button (right) to open the dropdown list and select one or more forms to be used to format the input file. Click **OK** to finish.
- To select a queue, click on the **Select queues** button (right) next to the panel to select one or more queues to replicate (copy) the input file to. Be careful to not create circular dependencies i.e. Queue "A" replicates to Queue "B" that replicates to Queue "C" that passes it back to Queue "A". This will result in a loop and eventually an error.

With **Resolve** (rule file) selected:

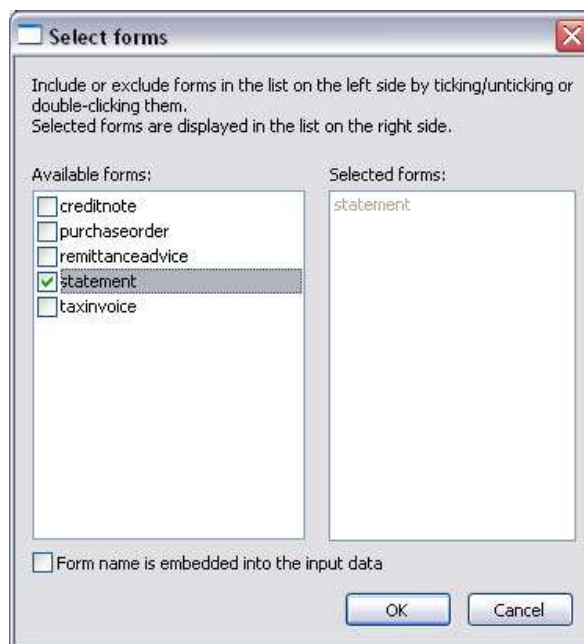
- Once the rule file is selected it's document entries are displayed in the **Formatting and replication** panel as top-level elements. The special **ID FAILURE** entry is used when files cannot be identified.
- For each entry in the list, you can use the **Select forms**, **Select queues**, and **Remove** button to both process and replicate these entries.



To add a form or queue, tick the items from **Available items** list, and then you will see them as **Selected items** appearing on the right panel. Click **OK**.

Ticking the option **Form name is embedded into the input data** expects a form selection as the first line within the input data (**##F#formname#**) and ignores all selected form names.

#### More information on embedded form names



To remove a form or queue, select on the item(s) from the **Formatting and replication** panel, either press the **Delete** key, or the **Remove** button.

#### Formatting options

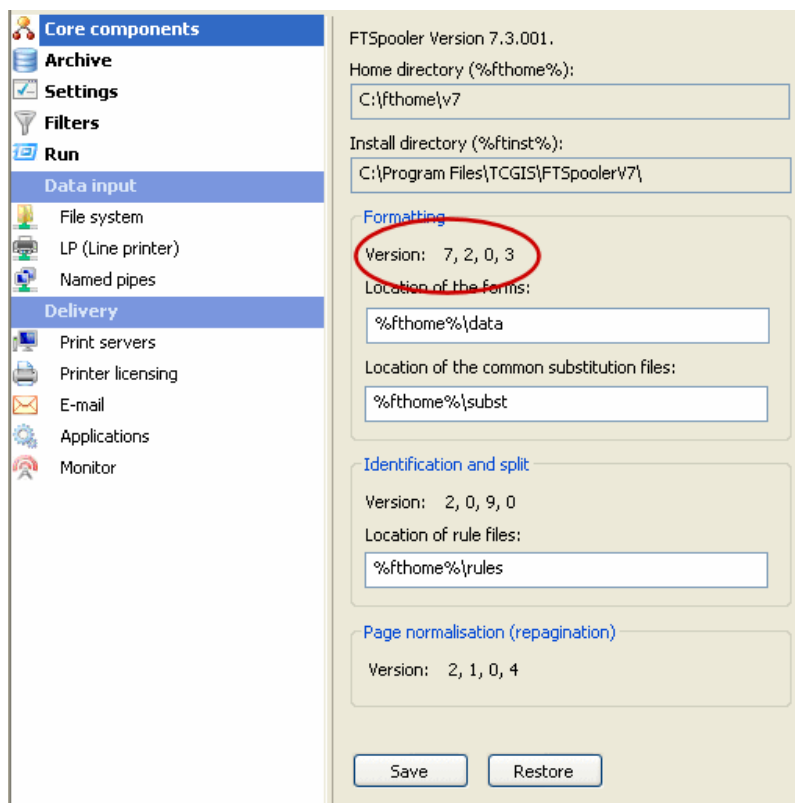
Formatting Options allow users to specify general formatting preferences for the forms being processed by the queue. This is typically used to overwrite the color default - xcolor or xncolor.

Option	Description
All options must be in the format -x[option]. Multiple options should be separated by a comma. For example, -xncolor,nopjl	
-xcolor/ -xcolour	Use color commands.
-xncolor/ -xnocolour	Do NOT use color commands (default).
-xres	Use high-resolution user-defined PCL fill patterns (default).

	setup printer and reset it (default).
-xnoj	Do NOT use HP Printer Job Language before and after print job to setup printer and reset it.
-xgl2	Use HP GL/2 for advanced PCL drawing (default).
-xnogl2	Do NOT use HP GL/2 for advanced PCL drawing.
-xbigfont	Turns on support for sending True Type font headers to PCL printers that are larger than 32767 bytes (default).
-xnobigfont	Type 2 font headers (under 32Kb) are used when sending downloaded fonts. REQUIRED for Lexmark T63x, T64x and T65x printers and all others that do not support Type 3 font headers.  Note: Default is <b>nobigfont</b> for version 6.3 and lower, <b>bigfont</b> for version 6.4 and later.

### Asian Fonts – Special Setting for Version 7.3.0.1 and lower version of FormTrap:

See **Setup, Core components, Formatting, Version**:



For Asian and any other double-byte fonts, please set all **Queues, Processing** tab, **Options**: to **-s**. This speeds up FormTrap by a factor of 10 or more. For additional details see Asian Fonts in the [www.formtrap.com](http://www.formtrap.com) Knowledge Base. **-s** is another parameter in this list and should be space separated from the **-x** parameter.

### Associated file entries

An Associated file is produced by the Print Logic when the document is created. The associated file may contain information on the delivery requirements of a document, or may contain user-specified data. Entries in the file are represented using a **name=value** syntax, where "**name**" refers to the field name identifies the data contained in the "**value**". e.g. **emailto=user@domain\_name.com** the **user@domain\_name.com** is identified as the value of an **emailto** field.

#### More information on Associated files

The advantage of the facility is that each document in any given batch can be handled according to its specific delivery requirements, without having to initially separate the jobs in the originating application.

When either **value** is blank or the **name=value** entry does not appear, the document will be handled according to the Associated file options as set in FTSpooler.

the Associated file and those specified in the queue properties are used.

- **Ignore** - The delivery method(s) specified in the queue properties are used; Associated file delivery method(s) are ignored.
- **Overwrite (recipients of the same type)** - If the delivery method specified in the Associated file and the delivery method specified in the queue properties are the same (e.g. both print) then the delivery option specified in the Associated file is used.
- **Overwrite (all recipients)** - Delivery method(s) specified in the Associated file delivery options are used. If there is no delivery method (i.e. recipient) specified in the Associated file, the delivery method specified in the queue properties will be used.

Click the **Apply** button to save the changes.

[Top](#)

[Disclaimer](#) | [Home](#) | [About Us](#) | [News](#) | [Products](#) | [Customers](#) | [Free Trial](#) | [Contact Us](#) | [Success Stories](#)

Copyright 1995-2011 TCG Information Systems Pty. Ltd. All rights reserved.