



SBE Manual V7.5

[Start](#) | [Queues](#) | [Data Folders](#) | [Archive](#) | [Setup](#) | [Submit](#)
[Associated Files](#) | [Other Add-ons](#) | [Related Batch Processes](#) | [Special Forms](#)

[FTDesign Manual V7.2](#)
[I'm Stuck!](#)

Queue Setup

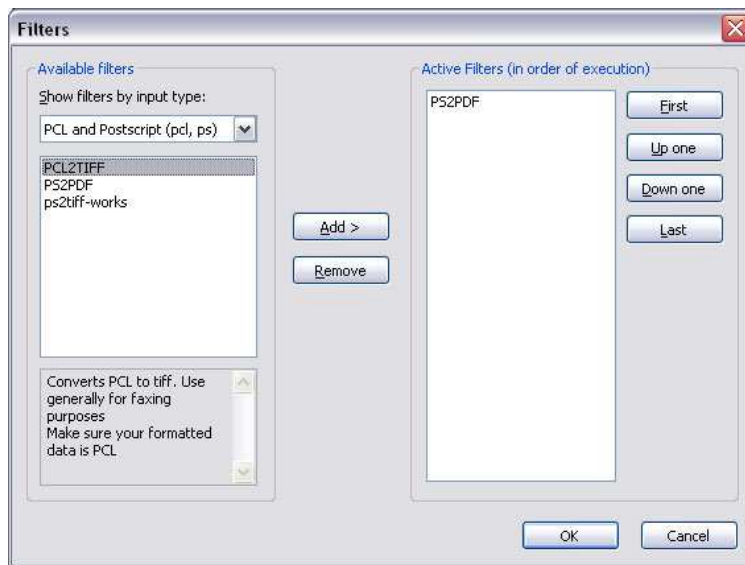
- ▶ [What is a Queue](#)
- ▶ [Create a Queue](#)
- ▶ [Delete a Queue](#)
- ▣ [Queue Properties](#)
 - ▶ [General](#)
 - ▶ [Processing](#)
 - ▶ [Filters](#)
 - ▶ [Print](#)
 - ▶ [Email](#)
 - ▶ [Fax](#)
 - ▶ [File](#)
 - ▶ [Applications](#)
- ▶ [Print to ANY Windows Printer](#)
- ▶ [Tools](#)

Queue Properties

Define Filters

In the **Filters** window, select the input document type from **Show filters by input type** dropdown menu, this returns a list of available filters. Select a filter to view its description below, click **Add >** to add it to the **Active Filters** list. Order of execution of the filters can be changed using the four buttons to the side.

- **First** - the selected active filter is moved to the top.
- **Up one** - the selected active filter is moved one position up.
- **Down one** - the selected active filter is moved one position down.
- **Last** - the selected active filter is moved to the bottom.



To remove a filter, select an **Active Filters** and click **Remove**.

Click the **OK** button.

[Top](#)

[Disclaimer](#) | [Home](#) | [About Us](#) | [News](#) | [Products](#) | [Customers](#) | [Free Trial](#) | [Contact Us](#) | [Success Stories](#)

Copyright 1995-2011 TCG Information Systems Pty. Ltd. All rights reserved.