



SBE Manual V7.5

Start | **Queues** | Data Folders | Archive | Setup | Submit
Associated Files | Other Add-ons | Related Batch Processes | Special Forms

Queue Setup

- ▶ What is a Queue
- ▶ **Create a Queue**
- ▶ Delete a Queue
- ▶ Queue Properties
- ▶ Print to ANY Windows Printer
- ▶ Tools

Create a Queue

Once a data folder is created and loaded, queues are created to accept, identify and route and/or process incoming data. A "template" queue is available (grey and at the bottom of the Queue list) and can be modified or new ones added to be models used by the **New TYPE queue** options on the menu. We recommend a template queue for each of the three shortcuts.

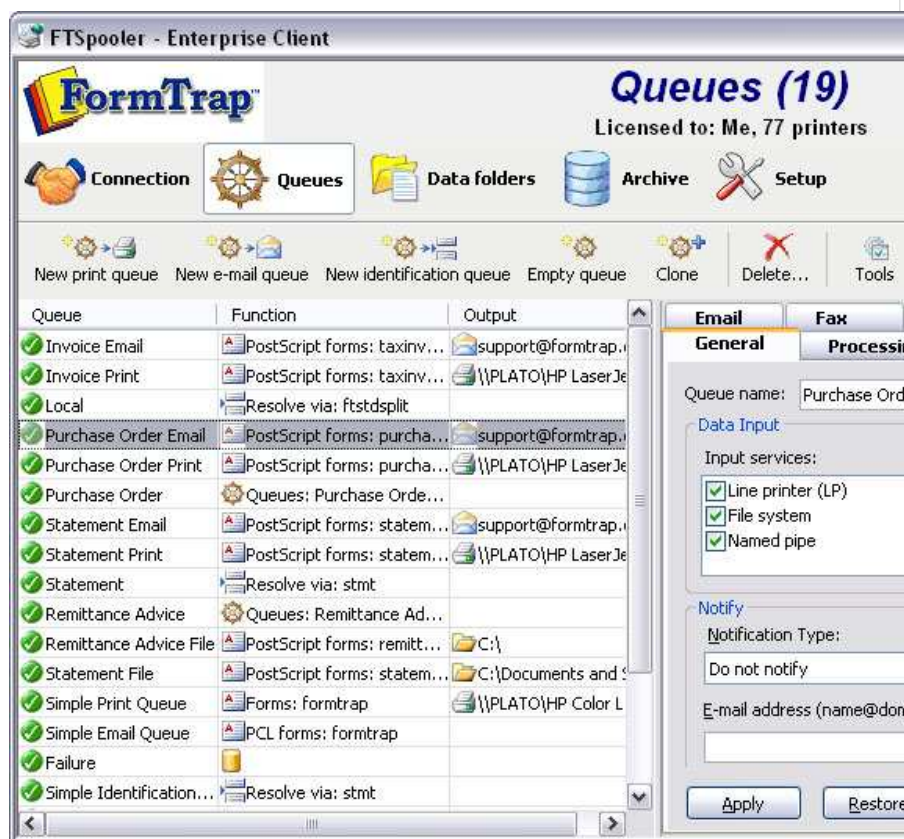
To create a new queue or modify an existing queue, configure queue properties in each tab in the **properties Bar**, located in the right side of the FTSpooler Window. **General**, **Processing**, and **Filters** specify how to identify and build FormTrap document whereas **Print**, **Email**, **Fax**, and **Applications** deal with delivery options. **General** and/or **Processing** or **Filters** tabs are the minimum requirements for new queues.

These create a queue using the entire tab set:

- **Empty queue**
- **Clone**

Shortcuts condense queue properties for the common queues into a single window,

- **New Print queue**
- **New Email queue**
- **New Identification queue**



[Top](#)

Empty queue

To create a new queue:

- Select **Empty queue** button from the top menu.
- **Properties Bar** presents the **General** settings:
 - Enter unique **Queue name** and set **Data Input** options.
 - **Notify** (optional) sets an email address for successful and/or failure notification emails.

per day.

- Click **Apply** to save the settings.

More information on Queue Properties - General

- The **Processing** tab provides logic control over each data type identified by the (optional) Rules file, which then appear in the Formatting and Replication list. Without a Rules file, just the one entry appears in Formatting and Replication.
 - Set the split rules, form(s), queue redirections, formatting options and processing options for this queue.
 - Click **Apply** to save the settings.

More information on Queue Properties - Processing

- **Filters** tab is used to add "Filter Programs" at various points. Filters generally modify their input data. An External Input Filter is used to convert data from the locale (e.g. US English) to UTF-8 code. The **Western** filter is used for Western languages. Other locale filters are available from FormTrap support. User-written filters are very occasionally used to address very difficult data representation problems. **Post formatting filters** may be used to action device-specific operations, such as stapling. **Associated file filters** are used for user-written routines (such as removal of characters with meaning as File Names where the user has no control of field values line "Invoice 1234/56").
 - Add external input filters, pre-identification filters, post-formatting filters or associated file filters for this queue.
 - Click **Apply** to save the settings.

More information on Queue Properties - Filters

- **Print** tab nominates which printer(s) to associated with this queue as well as printer filters for delivery. Click **Apply** to save the settings.

More information on Queue Properties - Print

- **Email** tab configures email delivery settings using either SMTP service or Outlook (MAPI). Click **Apply** to save the settings.

More information on Queue Properties - Email

- **Fax** tab defines options for delivery via the Windows fax service XP and after. Click **Apply** to save the settings.

More information on Queue Properties - Fax

- **File** tab defines write-to-file options, including setting up folder structures for PDF archival. Click **Apply** to save the settings.

More information on Queue Properties - File

- **Applications** tab defines options for customized delivery processes, such as third party fax products, or for your own applications. Click **Apply** to save the settings.

More information on Queue Properties - Applications

[Top](#)

Clone (copy) a queue

If the queue being created is similar to an existing queue, select **Clone**. This creates a new queue using the highlighted queue's settings. The new queue's name and properties can then be modified. This is most useful where queues with extensive rule files are required across a number of printers.

To copy an existing queue:

- Select the queue to be copied.
- Select **Clone** button from the top menu.
- **General** tab presents, with **Queue name** shown as **copy of Highlighted Queue**, change this (at minimum), plus any other tabs, notably **Print**.

[Top](#)

New print queue

This is a short cut to create a simple print queue from a template queue:

- Select **New print queue** button from the top menu.
- The **Simple print queue** dialog box pops up.
- Enter the **Name** of the queue.

menu display in the format of *form name (datafolder name)*, for instance, **statement (formtrap)**, where **statement** is the form name and **formtrap** is the datafolder name.

- Select a **Printer** from the dropdown menu.

- Click **OK**.

[Top](#)

New email queue

Use this option if you have an email template queue to copy.

To create a simple email queue from an existing template:

- Select **New e-mail queue** button from the top menu.
- The **Simple email queue** dialog box pops up.
- Enter the **Name** of the queue.
- Choose the **Template** to copy.
- Choose the **Form** to be used in the queue. The available forms in the dropdown menu display in the format of *form name (datafolder name)*, for instance, **statement (formtrap)**, where **statement** is the form name and **formtrap** is the datafolder name.
- Select either **SMTP** or **Outlook (MAPI)** for the **Engine** option.
- Fill in the **Title**, **Subject**, and **Body** of the email. Use an associated file *variable* by quoting the associated file *name* in square brackets "[" and "]" (for example [Invoice No]) or leave "as is" to use specific Associated File fields (for example SMTPTo, Subj and SMTPBody).

[More information on Using Associated Files in FTSpooler Queues Properties](#)

- Click **OK**.

[Top](#)

New identification queue

If the queue being created receives input that needs to be identified and routed, and is similar to one of the templates, use this to create it. The new queue's properties can be

- Select **New identification queue** button from the top menu.
- The **Simple identification queue** dialog box pops up.
- Enter the **Name** of the queue.
- Choose the **Template** to copy.
- Choose the **Rule** file to be used in the queue.
- Choose the queue to be replicated to the selected queue, and click the **Apply** and move to the next rule button to continue. One queue per rule must be entered.

Rule	Queue
Statement_Email	Statement Email
Statement_File	Statement File
Statement_Print	Statement Print
-- ID FAILURE --	Failure

- Click **OK**.

[Top](#)

Create a template Queue

A template queue can be created as the “to copy” queue for other queues that share it’s standards.

To create a template queue:

- Right click and select **New template** from the list.
- Update the queue properties in the **Properties Bar** (at minimum **Queue name** on the **General** tab).
- Save the queue as a named template.

Describe the queue in the name (for example Print Queue - PCL) and set all of the standard tabs to match your most common queue type.

[Top](#)