

## FTDesign Manual V7.5

[Theory & Decisions](#) | [Tools & Options](#) | [Printline or Records mode](#)  
[Design & Objects](#) | [Masking & Font Change](#) | [Projects](#) | [Testing & Viewing](#)  
[Repaginator](#) | [FTSplitDef](#) | [Registry Update](#) | [Special Forms](#)

[Full PDF Manual](#)  
[Enterprise V7.5 Manual](#)  
[SBE V7.5 Manual](#)

### FormTrap Repaginator

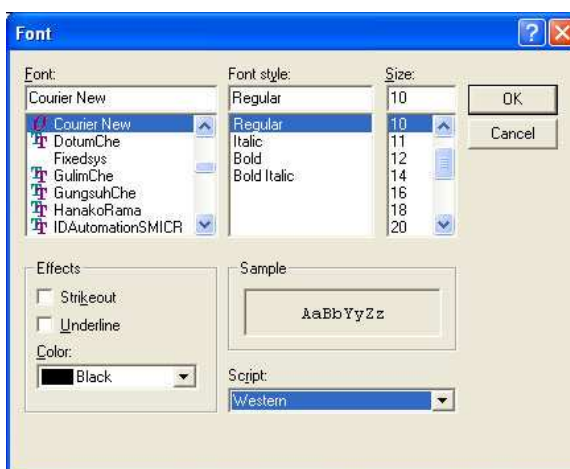
- ▶ Overview
- ▶ Loading a Sample Data File
- ▶ Entry
- ▶ Tools
  - ▶ Options
  - ▶ Test
  - ▶ **Font**
- ▶ Running Repaginator from Command Line

#### Tools - Font

The Repaginator provides the option to change the display font for the input data file and the repaginated output. You MUST use a mono-spaced font, such as Courier New or LtrGothic.

To change the font in Repaginator:

- Choose **Font** from the **Tools** menu.
- In the **Font** dialog box,
  - **Font** - select a monospaced font type.
  - **Font Style** - font should be Regular or Bold.
  - **Size** - select the size of the font. 10 or 12 point if preferable for most data files.
  - **Effects** - do not Underline, remove by unchecking the Underline box.
  - **Color** - select the color of the text.
  - **Script** - determines the writing system of the print stream in the Repaginator window. Western for English and most Roman fonts.



[Top](#)

[Disclaimer](#) | [Home](#) | [About Us](#) | [News](#) | [Products](#) | [Customers](#) | [Free Trial](#) | [Contact Us](#) | [Success Stories](#)

Copyright © 1995-2011 TCG Information Systems Pty. Ltd. All rights reserved.