



FTDesign Manual V7.5

Theory & Decisions | Tools & Options | Printline or Records mode
 Design & Objects | Masking & Font Change | Projects | Testing & Viewing
Repaginator | FTSplitDef | Registry Update | Special Forms

FormTrap Repaginator


- ▶ Overview
- ▶ Loading a Sample Data File
- ☰ Entry
 - ▶ Entry
 - ▶ Header
 - ▶ Footer
 - ▶ Data
 - ▶ **Rules**
 - ▶ Properties
 - ▶ Evaluation Order of Entries
 - ▶ Evaluation Order of Areas
 - ▶ Delete an Entry, Area or Rule
- ☰ Tools
 - ▶ Running Repaginator from Command Line

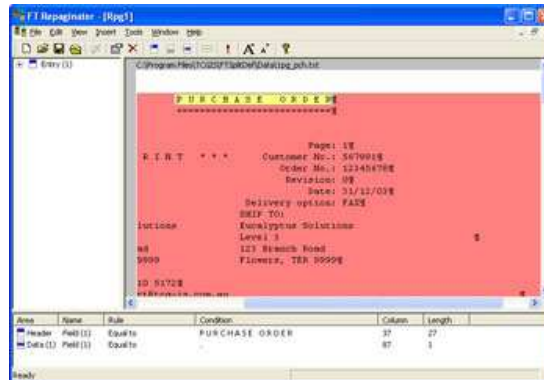
Rules

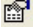
You need to define one or more rules on your header, footer and data areas so the Repaginator can identify that text as that particular type.

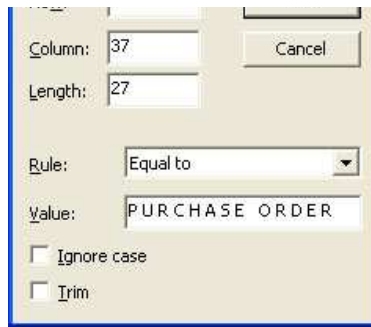
Using the Header rule as an example, you require a rule to distinguish the header as the FIRST header for this document. You do not want your header area rule to succeed for every header instance, only the first. This means looking for "Page: 1" or a change in the document number. Ensure that the rule TESTING for "Page: 1" does not also succeed for "Page: 10", "Page: 11" and so on, as it WOULD for the example below where the page is left-aligned. In this case, use a "**Change**" value such as the Order No. Value.

To create a rule:

- Select the area you wish to create the rule on.
- Click the **Insert match field tool**  button on the toolbar, or go to the **Insert** menu, select
 - **Rule (match)** - creates rules with default evaluation rule **Equal to**.
 - **Rule (change)** - creates rules with default evaluation rule **Change**.
- Highlight the text you wish to use for this rule. The rule is displayed in yellow and listed in the **Areas window** under the selected area.



- Select the rule and choose **Properties** from the **Edit** menu or click the **Properties tool**  button on the toolbar.
- In the **Rule** dialog box, you can change the evaluation **Rule** from the dropdown list.
 - In the **Value** text box, enter the text the rule should match.
 - To ignore the case of the text, tick the **Ignore case** checkbox.
 - By default, the Repaginator looks for an exact string (including spaces and capitals). As a result, if the highlighted area for the rule is bigger than the text in the **Value** text box the rule will not succeed.
 - To trim the size of the highlighted area during run-time (i.e. to look for the text in the **Value** text box somewhere within the highlighted area), tick the **Trim** checkbox.



Column: 37

Length: 27

Rule: Equal to

Value: PURCHASE ORDER

Ignore case

Trim

Cancel

- Click **OK** to save the changes to your rule.

[Top](#)

[Disclaimer](#) | [Home](#) | [About Us](#) | [News](#) | [Products](#) | [Customers](#) | [Free Trial](#) | [Contact Us](#) | [Success Stories](#)

Copyright © 1995-2011 TCG Information Systems Pty. Ltd. All rights reserved.