

FTDesign Manual V7.5

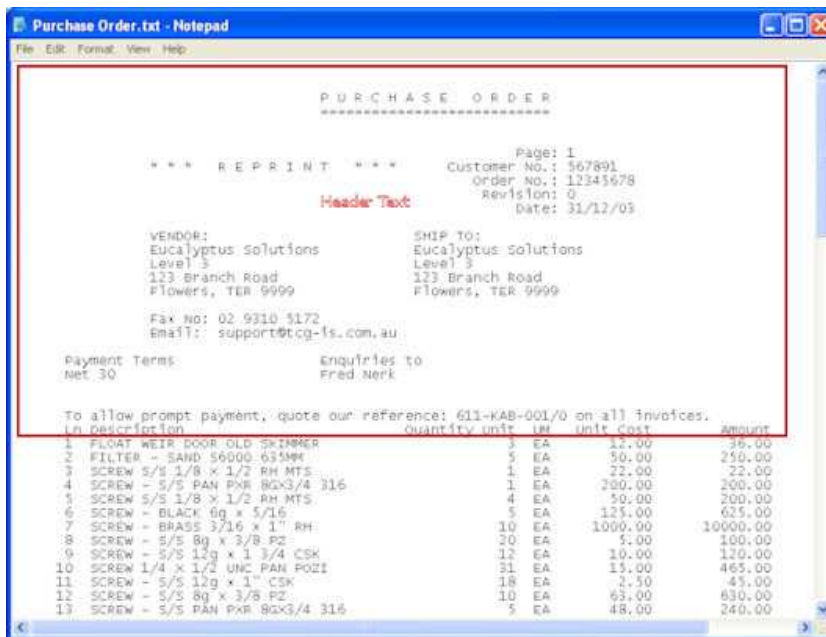
Theory & Decisions | Tools & Options | Printline or Records mode
 Design & Objects | Masking & Font Change | Projects | Testing & Viewing
Repaginator | FTSplitDef | Registry Update | Special Forms

FormTrap Repaginator


- ▶ Overview
- ▶ Loading a Sample Data File
- ☰ Entry
 - ▶ Entry
 - ▶ **Header**
 - ▶ Footer
 - ▶ Data
 - ▶ Rules
 - ▶ Properties
 - ▶ Evaluation Order of Entries
 - ▶ Evaluation Order of Areas
 - ▶ Delete an Entry, Area or Rule
- ☰ Tools
 - ▶ Running Repaginator from Command Line

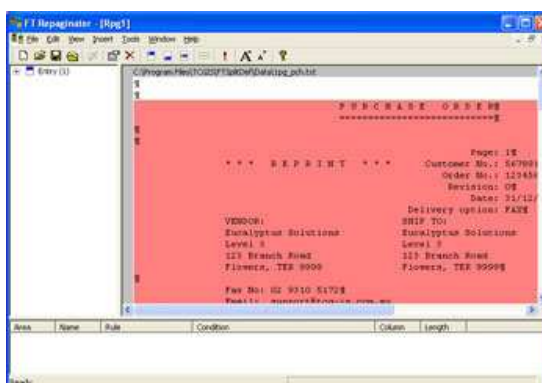
Header Area

The header area holds text that outputs at the top of your repaginated data file and should include all of the header information, down to and including any title lines. You may have a raw data file that contains two purchase orders, each purchase order spanning multiple pages. The output of the repagination process must contain two headers, one for each purchase order.



To insert a new header area and hence a new entry:

- Select **New Entry - Header area** from the **Insert** menu or click the **Insert document header tool**  button on the toolbar.
- Highlight the area in the **Mapping window** that represents your document header and release the mouse button. The header area is displayed in red and your entry and header listed in the **Areas window**.



You would now set up **rules** to identify the Header.

Top