



PDF version

FTDesign Manual V7.5

Theory & Decisions | Tools & Options | Printline or Records mode
 Design & Objects | Masking & Font Change | Projects | Testing & Viewing
Repaginator | FTSplitDef | Registry Update | Special Forms

Full PDF Manual
 Enterprise V7.5 Manual
 SBE V7.5 Manual


FormTrap Repaginator

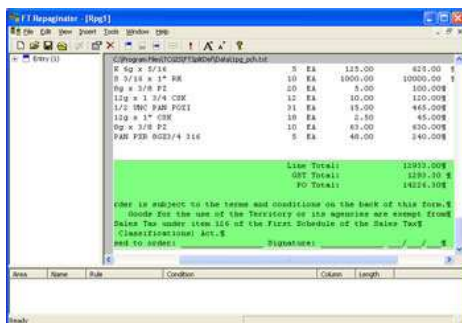
- ▶ Overview
- ▶ Loading a Sample Data File
- ▶ Entry
 - ▶ Entry
 - ▶ Header
 - ▶ **Footer**
 - ▶ Data
 - ▶ Rules
 - ▶ Properties
 - ▶ Evaluation Order of Entries
 - ▶ Evaluation Order of Areas
 - ▶ Delete an Entry, Area or Rule
- ▶ Tools
 - ▶ Running Repaginator from Command Line

Footer Area

The footer area holds the total information for the document and is therefore optional as some documents may not have totals. The footer area is inserted directly after the header area in the output from the repagination process. This allows you to define footer fields on the Base page of your FormTrap form. It also removes the hassle of having floating totals in your data file, making forms design much simpler. You may only define one footer area.

To create a footer area for this entry:

- Select **Footer area** from the **Insert** menu or click the **Insert document footer tool**  button on the toolbar.
- Highlight the text in the **Mapping window** that represents your document footer and release the mouse button. The footer area is displayed in green and your footer listed in the **Areas window**.



You would now set up **rules** to identify the Footer.

[Top](#)

[Disclaimer](#) | [Home](#) | [About Us](#) | [News](#) | [Products](#) | [Customers](#) | [Free Trial](#) | [Contact Us](#) | [Success Stories](#)

Copyright © 1995-2011 TCG Information Systems Pty. Ltd. All rights reserved.