

## FTDesign Manual V7.5

Theory & Decisions | Tools & Options | **Printline or Records mode**  
 Design & Objects | Masking & Font Change | Projects | Testing & Viewing  
 Repaginator | FTsplitDef | Registry Update | Special Forms

### Printline or Records Mode

#### Printline Mode

- ▶ Overview
- ⊕ Input Data

#### Records Mode

- ▶ Overview
- ⊖ Input Data
  - ▶ **Defining Fields**
  - ▶ Identifiers in Design

#### Pre-defined Variables

- ▶ Pre-defined Variables

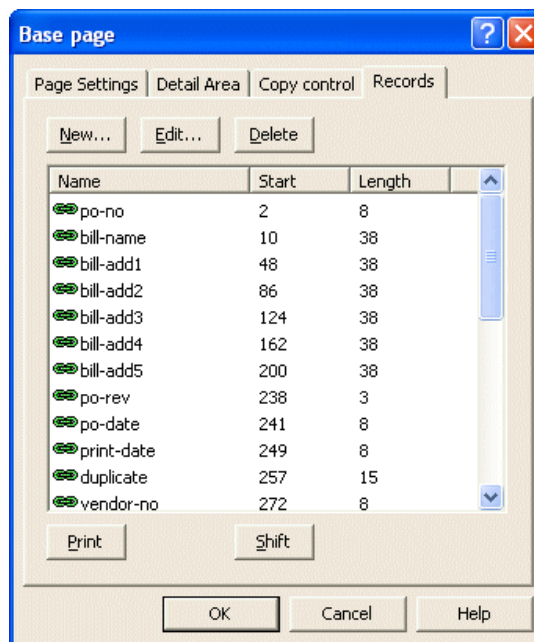
### Defining Fields

In Records mode the unique **page element identifier**, as the first character of that row, indicates what fields follow. The name, start position and length defines each field. While unusual, each field can also be defined as needed, as the variable text or barcode object is created.

#### Create fields

To define the fields on each page element:

- Select the appropriate page element on the **Go** menu.
- Select **Properties of...** from the Define menu.
- On the **Records** tab, click on the **New...** button to add a new field.



- Type in the field name, start position and length. Note, you may sub-define a field, in which case the longer field is sorted ahead of its sub-definition fields.



- Click the **OK** button.
- Repeat the above steps to add other fields to the page element.

[Top](#)

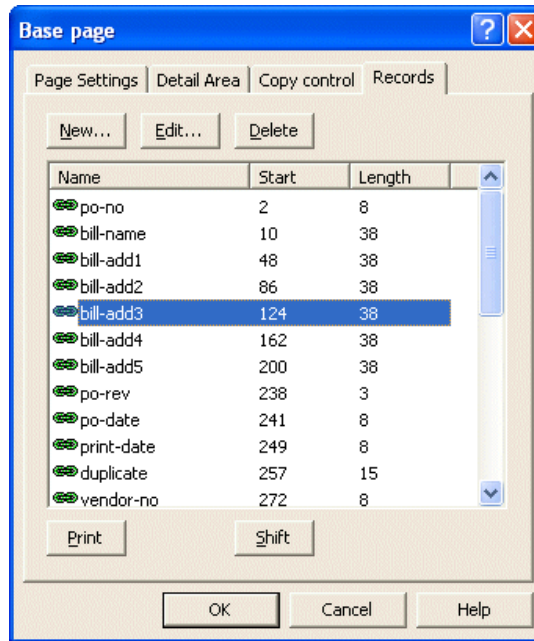
#### Delete fields

To delete a field:

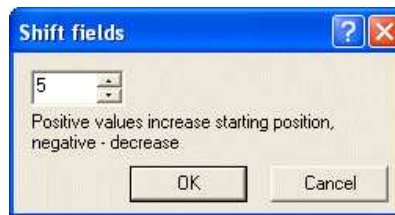
- Select the appropriate page element on the **Go** menu.
- Select **Properties of...** from the **Define** menu.
- On the **Records** tab, click and select the field you wish to delete.
- Click on the **Delete** button to delete the field.

To shift the starting position or fields within a record:

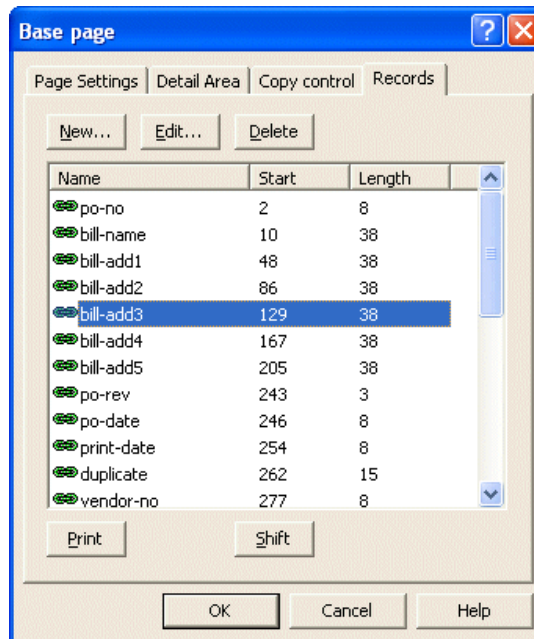
- Select the appropriate page element on the **Go** menu.
- Select **Properties of...** from the **Define** menu.
- On the **Records** tab, click and select the field you wish to shift.



- Click on the **Shift** button.
- In the **Shift fields** dialog box, enter a positive number to increase the starting position and a negative value to decrease the starting position.



- The starting position of the selected field and all subsequent fields will shift accordingly.



Top

