



FTDesign Manual V7.5

Theory & Decisions | Tools & Options | **Printline or Records mode**
 Design & Objects | Masking & Font Change | Projects | Testing & Viewing
 Repagination | FTSplitDef | Registry Update | Special Forms

Printline or Records Mode

Printline Mode

- ▶ Overview
- ☰ Input Data
 - ▶ Loading a Sample Input File
 - ▶ Repagination
 - ▶ Defining Fields
 - ▶ Mapping the Variables
 - ▶ **Establishing Comparison Rules**

Records Mode

- ▶ Overview
- ☰ Input Data

Pre-defined Variables

- ▶ Pre-defined Variables

Establishing Comparison Rules

Data files may contain different detail lines and sub-forms. The method used to distinguish between different lines (to select and print the correct format) is to use comparison rules to allow FormTrap to identify what it is looking at.

Each rule is a simple test. The following rules are available:

Rule	Description
No Rule	Default setting
Blank	Field must be blank
Not Blank	Field must contain data
Equal to	Field must equal the supplied characters
Not equal to	Field must not equal the supplied characters
Greater than	Field must be greater than the supplied characters
Greater than or equal to	Field must be greater than or equal to the supplied characters.
Less than	Field must be less than the supplied characters.
Less than or equal to	Field must be less than or equal to the supplied characters.

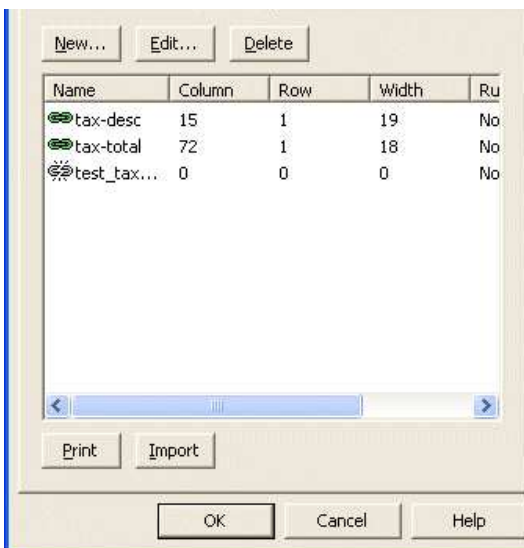
Setting Detail Line Rules

When a form has more than one detail line a comparison rule is used to establish which detail line is printed. Each rule is a simple test that must be satisfied for the detail line to print. Where a detail line has multiple rules, all of the rules must be satisfied to qualify. "Detail line" may be multiple lines from the file in some instances, where the set is represented in the same format.

To create a test variable on a detail line:


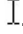
- Ensure that the appropriate detail line is selected on the **Go** menu.
- Select **Properties of...** on the **Define** menu.
- On the **Records** tab, click the **New...** button to add a new variable.
- Enter an appropriate name into the **Name** text box.

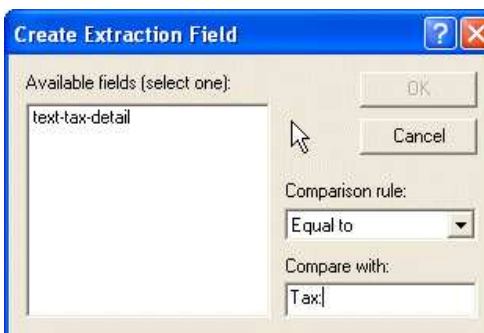
- Click the **OK** button to create the variable and then OK again to accept the changes.



- In the Structure Map Pane select the appropriate detail line.
- Find something that is unique to the detail line. In this example we will use the word "Tax".



- Click the Create extract button  on the toolbar. The cursor will change to an I-bar .
- Press and hold the left mouse button to highlight the characters representing the test data in your sample data file, displayed in the Printmap window. Allow for the full size of the field, not just what is visible on this page.
- Release the mouse button to open the **Create Extraction Field** dialog box.
- Select the corresponding test variable name from the **Available Fields** list.
- Select a comparison rule from the **Comparison rule** drop down menu. In this example we use the **Equal to** comparison rule and enter the comparison string "Tax" in the **Compare with** text box. The rule is case sensitive.



- The mapped Characters will be highlighted yellow to indicate a test variable.



[Top](#)

Defining Rule Evaluation Order

Evaluation order is the sequence in which FormTrap tests the comparison rules on the detail lines. Set the evaluation order of detail lines so there is no ambiguity in the evaluation, with the most specific rules evaluated first.

To change the order of evaluation for the detail lines:

- Right click on the detail line in the **Structure Map Pane**.
- From the drop down menu select **Evaluation order**.
- Move the detail line up or down using the options on the menu.
 - **Highest** - top of the evaluation order.
 - **Higher** - up one in the evaluation order.

top

[Disclaimer](#) | [Home](#) | [About Us](#) | [News](#) | [Products](#) | [Customers](#) | [Free Trial](#) | [Contact Us](#) | [Success Stories](#)

Copyright © 1995-2011 TCG Information Systems Pty. Ltd. All rights reserved.