



## FTDesign Manual V7.5

Theory & Decisions | Tools & Options | Printline or Records mode  
 Design & Objects | Masking & Font Change | Projects | Testing & Viewing  
 Repaginator | **FTSplitDef** | Registry Update | Special Forms

### FTSplitDef

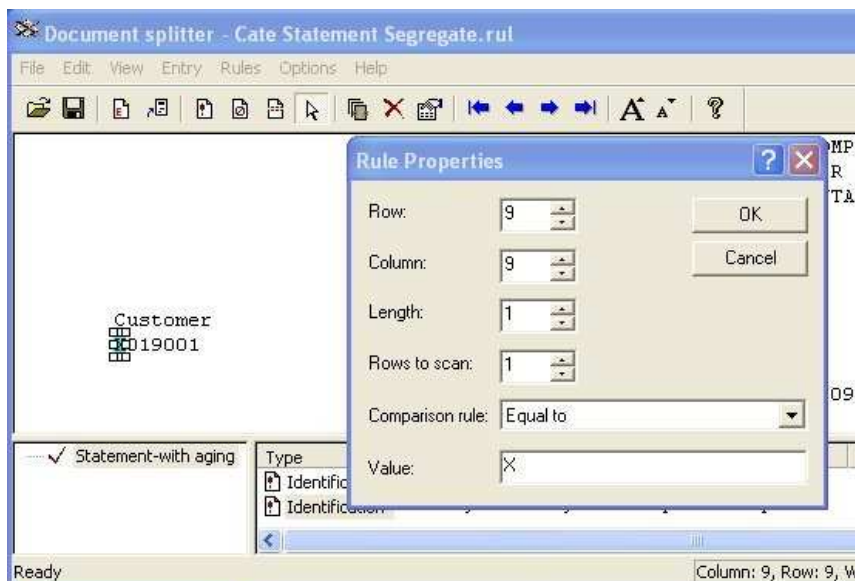
- ▶ Overview
- ▶ Loading a Data File
- ⊕ Entry
- ⊖ Rules
  - ▶ Identification
  - ▶ Unwanted Pages
  - ▶ Split
  - ▶ Properties
  - ▶ **Within Area Matching**
  - ▶ Evaluation Rules
- ⊕ Options
  - ▶ Splitting
- ⊕ Examples

#### Within Area Matching

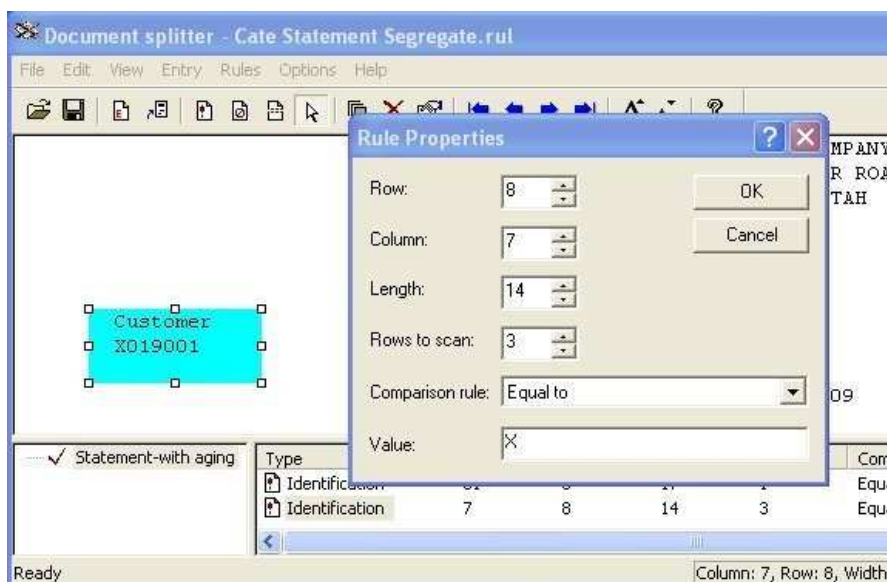
You can match "within an area" if you are not certain where the target is going to occur. This normally happens with literals in comment lines or when the originating program is inconsistent.

To match "within an area"

- Put in an exact match - normally "Equal to" for the required character (s), "X" in the example.



- Use the pointer to expand the area looked at. If the character(s) occur anywhere in this area, a "success" is recorded



Top