



FTDesign Manual V7.5

[Theory & Decisions](#) | [Tools & Options](#) | [Printline or Records mode](#)
[Design & Objects](#) | [Masking & Font Change](#) | [Projects](#) | [Testing & Viewing](#)
[Repaginators](#) | [FTSplitDef](#) | [Registry Update](#) | [Special Forms](#)

[Full PDF Manual](#)
[Enterprise V7.5 Manual](#)
[SBE V7.5 Manual](#)

FTSplitDef

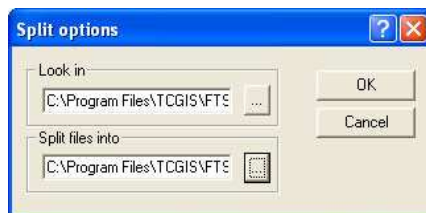
- ▶ Overview
- ▶ Loading a Data File
- ▶ Entry
- ▶ Rules
- ▶ Options
 - ▶ Font
 - ▶ Preferences
 - ▶ **Split Options**
- ▶ Splitting
- ▶ Examples

Split Options

The default folders that FTSplitDef locates the input and output files are specified in **Split Options**.

To configure the **Split options** of FTSplitDef:

- Choose **Splitting** from the **Options** menu.
- In the **Split options** dialog box, click the browse "..." button to select the default locations for input and output files.
 - **Look in** - the default location of raw data files.
 - **Split files into** - the default location of output files.



[Top](#)

[Disclaimer](#) | [Home](#) | [About Us](#) | [News](#) | [Products](#) | [Customers](#) | [Free Trial](#) | [Contact Us](#) | [Success Stories](#)

Copyright © 1995-2011 TCG Information Systems Pty. Ltd. All rights reserved.