



FTDesign Manual V7.5

[Theory & Decisions](#) | [Tools & Options](#) | [Printline or Records mode](#)
[Design & Objects](#) | [Masking & Font Change](#) | [Projects](#) | [Testing & Viewing](#)
[Repaginator](#) | [FTSplitDef](#) | [Registry Update](#) | [Special Forms](#)

[Full PDF Manual](#)
[Enterprise V7.5 Manual](#)
[SBE V7.5 Manual](#)

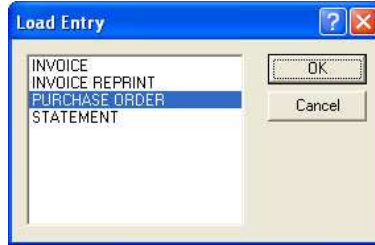
FTSplitDef

- ▶ Overview
- ▶ Loading a Data File
- Entry
 - ▶ Entry
 - ▶ Delete
 - ▶ **Load**
 - ▶ Properties
 - ▶ Evaluation Order
- Rules
- Options
- ▶ Splitting
- Examples

Loading an Entry

To load an entry:

- Select **Load** from the **Entry** menu.
- The **Load Entry** dialog box opens.



- Choose the entry to be loaded, and click the **OK** button.
- All the rules of the selected entry are loaded.

[Top](#)

[Disclaimer](#) | [Home](#) | [About Us](#) | [News](#) | [Products](#) | [Customers](#) | [Free Trial](#) | [Contact Us](#) | [Success Stories](#)

Copyright © 1995-2011 TCG Information Systems Pty. Ltd. All rights reserved.