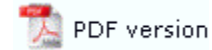




FormTrap Repaginator

- ▶ Overview
- ▶ Loading a Sample Data
- ▣ Entry
 - ▶ New Entry - Header Area
 - ▶ Footer Area
 - ▶ Data Area
 - ▶ Rules
 - ▶ Properties
 - ▶ Evaluation Order of Entries
 - ▶ Evaluation Order of Areas
 - ▶ Delete an Entry, Area or Rule
- ▣ Tools


Rules

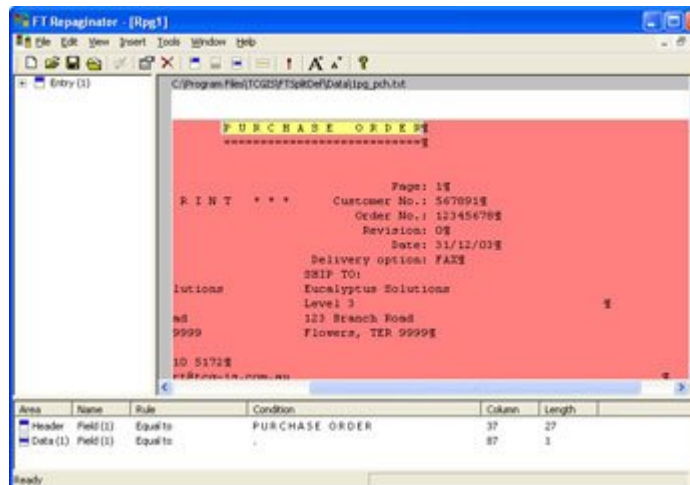



You need to define one or more rules on your header, footer and data areas so the Repaginator can identify that text as that particular type.

Using the Header rule as an example, you require a rule to distinguish the header as the FIRST header for this document. You do not want your header area rule to succeed for every header instance, only the first. This means looking for "Page: 1" or a change in the document number. Ensure that the rule testing for "Page: 1" does not also succeed for "Page: 10", "Page: 11" and so on.

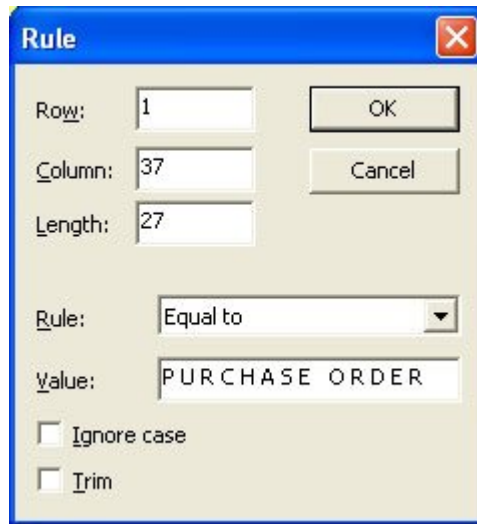
To create a rule:

- Select the area you wish to create the rule on.
- Click the Insert match field tool  button on the toolbar, or go to the Insert menu, select
 - Rule (match) - creates rules with default evaluation rule Equal to.
 - Rule (change) - creates rules with default evaluation rule Change.
- Highlight the text you wish to use for this rule. The rule is displayed in yellow and listed in the Areas window under the selected area.



- Select the rule and choose Properties from the Edit menu or click the Properties tool  button on the toolbar.

- In the Rule dialog box, you can change the evaluation Rule from the dropdown list.
 - In the Value text box, enter the text the rule should match.
 - To ignore the case of the text, tick the Ignore case checkbox.
 - By default, the Repaginator looks for an exact string (including spaces and capitals). As a result, if the highlighted area for the rule is bigger than the text in the Value text box the rule will not succeed.
 - To trim the size of the highlighted area during run-time (i.e. to look for the text in the Value text box somewhere within the highlighted area), tick the Trim checkbox.



The screenshot shows a 'Rule' dialog box with the following fields and options:

- Row: 1
- Column: 37
- Length: 27
- Rule: Equal to (dropdown menu)
- Value: PURCHASE ORDER
- Ignore case
- Trim

- Click OK to save the changes to your rule.