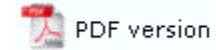




## FormTrap Repaginator

- ▶ Overview
- ▶ Loading a Sample Data File
- + Entry
- + Tools

### Overview

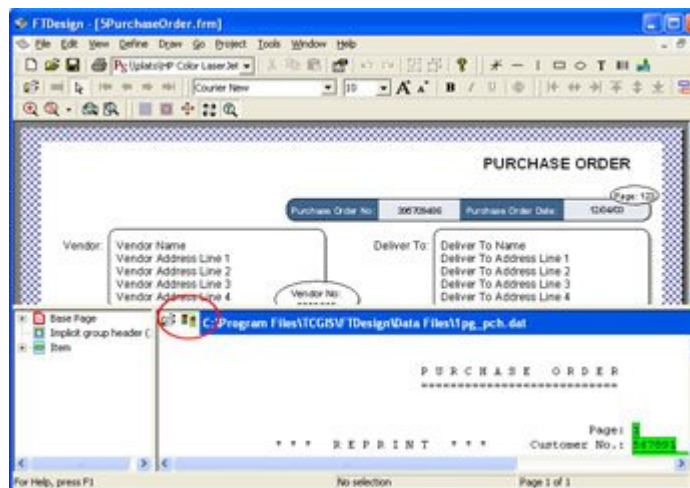


The FormTrap Repaginator works with Print Line Extract mode data, rearranging the structure of the data to transform multiple page documents into one page of input to the FormTrap process. The output from the Repaginator limits paper usage by reducing the number of output pages printed and allows more flexibility in the design of your FormTrap document.

[More information on the Properties of the Data File](#)

There are two ways to launch the FormTrap Repaginator:

- To launch the Repaginator from within FormTrap:
  - Open your form and load a sample data file in FTDesign.
  - Select Printline repaginator from the Tools menu, or click the Repaginator tool button on the top left corner of the Printmap window.

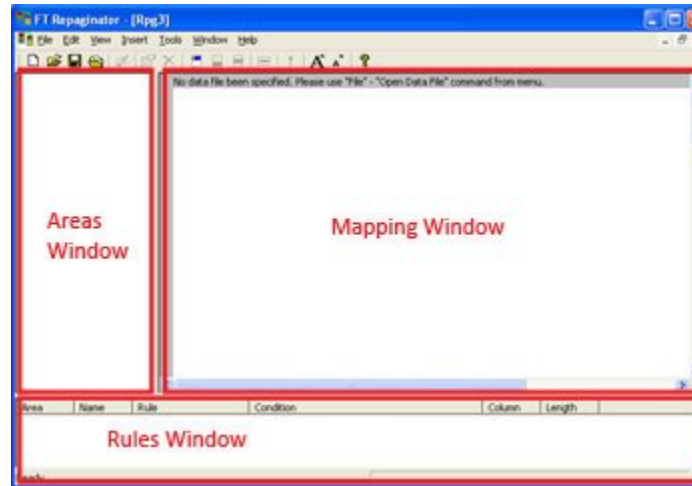


- To launch the Repaginator independently:
  - Browse to your FTDesign directory in Windows Explorer. By default, your FTDesign directory is located under C:\Program Files\TCGIS\.
  - Double click on the Repaginator executable named Rpg.exe to launch the Repaginator.

### Repaginator

Repaginator consists of three windows:

- Areas Window - contains a list of the defined entries and areas.
- Mapping Window - displays the sample data, onto which you can map the areas and rules.
- Rules Window - displays the rules you have created for the selected entry.



Top