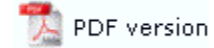




## FormTrap Repaginator

- ▶ Overview
- ▶ Loading a Sample Data
- Entry
  - ▶ New Entry - Header Area
  - ▶ Footer Area
  - ▶ Data Area
  - ▶ Rules
  - ▶ Properties
  - ▶ Evaluation Order of Entries
  - ▶ Evaluation Order of Areas
  - ▶ Delete an Entry, Area or Rule
- Tools

### Data Area




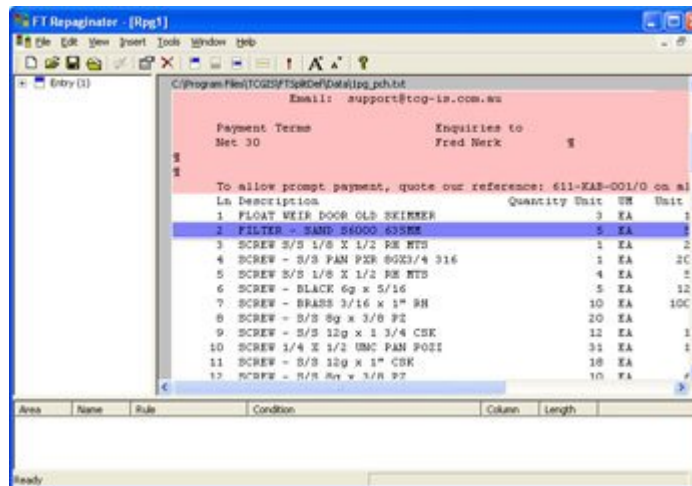
Data is generally defined by first identifying the items you do NOT want, then accepting everything else that is not blank. After creating the header and footer, you need to identify data lines that are redundant. These are the line sets to be removed:

- Subsequent page headings
- Continued and Carried forward messages
- Underlines
- Total texts that are redundant

You can then accept all remaining lines with a simple "not blank" test.

To create a data area in your entry:

- Select Data area from the Insert menu or click the Insert document detail line tool  button on the toolbar.
- Highlight the line(s) in the Mapping window that represent a data area and release the mouse button. The data area is displayed in purple and your data area listed in the Areas window.



[Disclaimer](#) | [Home](#) | [About Us](#) | [News](#)  
[Solutions](#) | [Customer Area](#) | [Free Trial](#) | [Success Stories](#) | [Contact Us](#)

**Copyright © 1995 - 2009 TCG Information Systems Pty. Ltd. All rights reserved.**