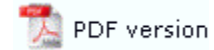


FTSplitDef

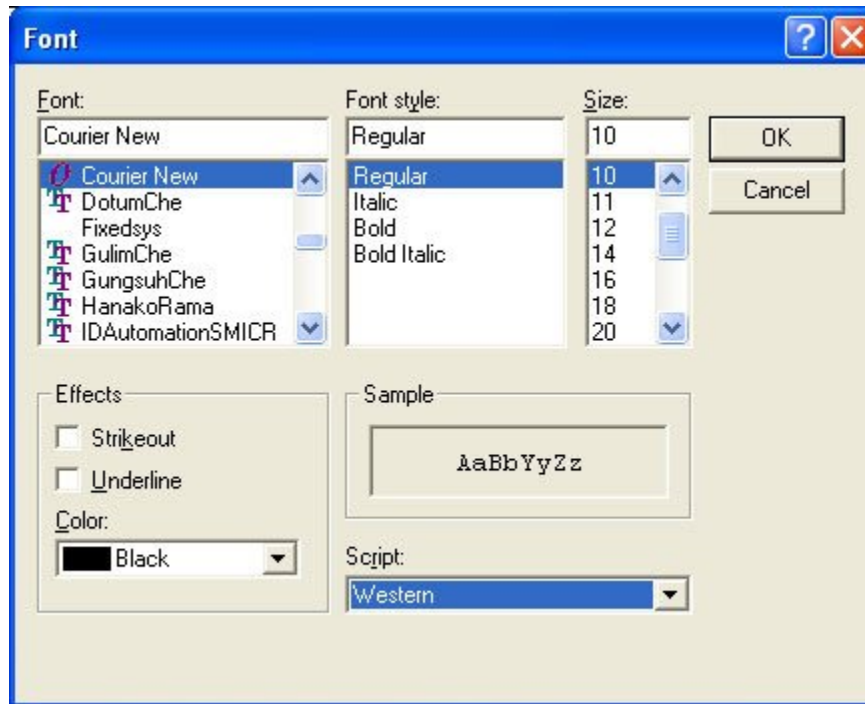
- ▶ Overview
- ▶ Loading Data File
- + Entry
- + Rules
- Options
 - ▶ Font
 - ▶ Preferences
 - ▶ Split Options
- ▶ Splitting
- ▶ Examples

Font Options



The attributes of the font used for the sample data file is set in the Font Options.

- Choose Font from the Options menu. Only fixed width fonts are shown.
- In the Font dialog box,
 - Font - select the font type. Courier New is ideal.
 - Font Style - select Regular (Bold, Italic and Bold Italic are unsuitable).
 - Size - select the size of the font.
 - Effects - leave as not Underlined.
 - Color - select the color of the text.
 - Script - select Western from FTDesign version 6.4 forward (Unicode).



[Disclaimer](#) | [Home](#) | [About Us](#) | [News](#)
[Solutions](#) | [Customer Area](#) | [Free Trial](#) | [Success Stories](#) | [Contact Us](#)

Copyright © 1995 - 2009 TCG Information Systems Pty. Ltd. All rights reserved.