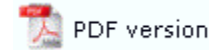


FTSplitDef

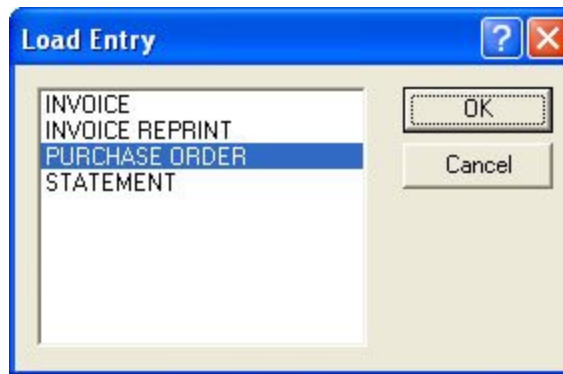
- ▶ Overview
- ▶ Loading Data File
- Entry
 - ▶ New
 - ▶ Delete
 - ▶ Load
 - ▶ Properties
 - ▶ Evaluation Order
- Rules
- Options
- ▶ Splitting
- ▶ Examples

Loading an Entry



To load an entry:

- Select Load from the Entry menu.
- The Load Entry dialog box opens.



- Choose the entry to be loaded, and click the OK button.
- All the rules of the selected entry are loaded.