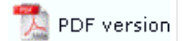




## Testing and Viewing

- ▶ [Load a Data File](#)
- ▶ [Preview the Form](#)
- ▶ [Save the Output File](#)

### Preview the Form

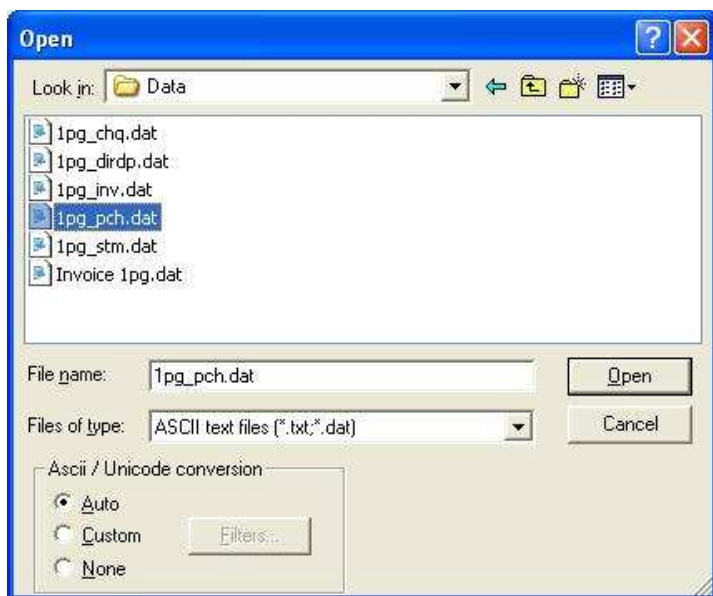


Before creating your load (.asc) file, you can test your forms using FTPreview. FTPreview simulates a production print run using the .asc file and a sample print stream.

#### Load a Data File

To preview your form:

- Select **Load data file...** from the **Tools** menu.
- In the **Open** dialog box, select the data file you wish to use as a sample.
- Select the appropriate **Ascii/Unicode conversion** option:
  - **Auto** - If necessary, FTDesign automatically converts the selected sample data file to Unicode based on your current system locale.
  - **Custom** - Choose a custom filter to convert the data file. Click the **Filters...** button and the **Input Filters** dialog box will open. Click **Add** and select a filter to be used for conversion.
  - **None** - No conversion filter is used.



- Click the **Open** button to load the sample data file.

The choice of **Auto** or **Custom** depends on the Locale of your machine (the language it operates in) and the language of the data file. If these are the same (Simplified Chinese for example) AND you have that filter loaded, **Auto** will suffice. If these are different (English Locale with Korean data), then you will need to choose **Custom** and select the appropriate Filter for the language of the data file. The Western filter is applied for all Roman languages (English, and European languages).

[Top](#)

#### Preview the Forms

To preview your form:

- Select **FTPReview (b&w)** or **FTPReview (color)** from the **Tools** menu.
- FTPreview appears with the sample data file formatted with the current form.
  - **PCL Preview** - if you have selected a PCL printer driver to preview the form, the preview will be in b&w PCL format. If you selected FTPreview (color) color objects will appear as "blobs".
  - **PCLXL (PCL6)** - if you have selected a PCLXL (PCL6) printer to preview the form, the preview will be in color or b&w depending on your preview selection. This is a TCG-written routine and allows the option "Print to ANY Windows Printer" in the production system.
  - **PostScript Preview** - if you have selected a PostScript printer driver to preview the form, the preview will be via Adobe PDF viewer in color PDF format for **FTPReview (color)**, or black and white PDF for **FTPReview (b&w)**.

If a data file has not been loaded to use as sample input FormTrap will not be able to preview the form.

[More information on Configuring FTPreview in Design Options](#)

[Top](#)

#### Save the Output File

**Preview files...** shows details from the prior preview, meaning you can view the Log file produced by the formatting program and save the output file.

Output files are named "**out**" with extensions **.pcl**, **.pclxl** (pcl6) and **.ps**.

From version 7.2.0.2 of FTDesign, you can also view the Associated File.

[Top](#)

[Disclaimer](#) | [Home](#) | [About Us](#) | [News](#)  
[Products](#) | [Customer Area](#) | [Free Trial](#) | [Success Stories](#) | [Contact Us](#)

**Copyright © 1995 - 2010 TCG Information Systems Pty.Ltd. All rights reserved.**