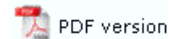




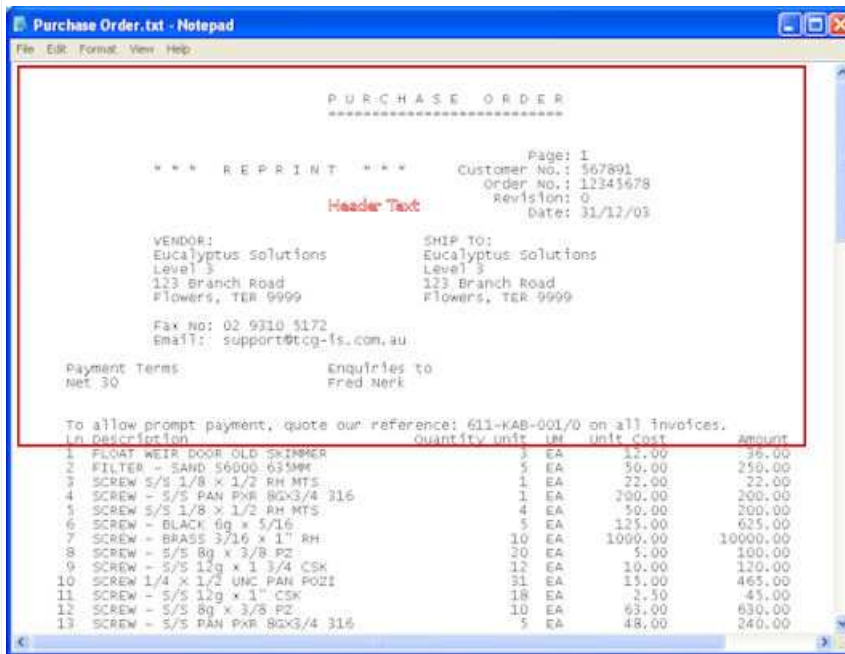
## FormTrap Repaginator

- ▶ Overview
- ▶ Loading a Sample Data
- ▣ Entry
  - ▶ New Entry
  - ▶ **Header Area**
  - ▶ Footer Area
  - ▶ Data Area
  - ▶ Rules
  - ▶ Properties
  - ▶ Evaluation Order of Entries
  - ▶ Evaluation Order of Areas
  - ▶ Delete an Entry, Area or Rule
- ▣ Tools
  - ▶ Running Repaginator from a Command Line

### Header Area

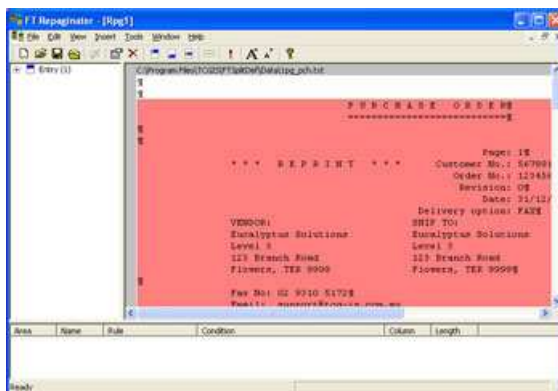


The header area holds text that outputs at the top of your repaginated data file and should include all of the header information, down to and including any title lines. You may have a raw data file that contains two purchase orders, each purchase order spanning multiple pages. The output of the repagination process must contain two headers, one for each purchase order.



To insert a new header area and hence a new entry:

- Select **New Entry - Header area** from the **Insert** menu or click the **Insert document header tool** button on the toolbar.
- Highlight the area in the **Mapping window** that represents your document header and release the mouse button. The header area is displayed in red and your entry and header listed in the **Areas window**.



You would now set up **rules** to identify the Header.