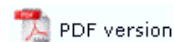




## FormTrap Repaginator


- ▶ Overview
- ▶ Loading a Sample Data
- ▶ Entry
  - ▶ New Entry
  - ▶ Header Area
  - ▶ **Footer Area**
  - ▶ Data Area
  - ▶ Rules
  - ▶ Properties
  - ▶ Evaluation Order of Entries
  - ▶ Evaluation Order of Areas
  - ▶ Delete an Entry, Area or Rule
- ▶ Tools
  - ▶ Running Repaginator from a Command Line

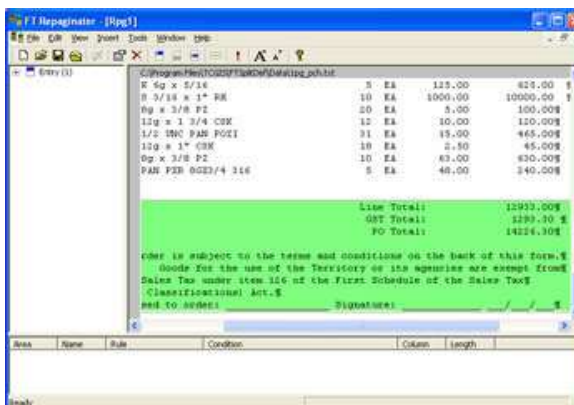
### Footer Area



The footer area holds the total information for the document and is therefore optional as some documents may not have totals. The footer area is inserted directly after the header area in the output from the repagination process. This allows you to define footer fields on the Base page of your FormTrap form. It also removes the hassle of having floating totals in your data file, making forms design much simpler. You may only define one footer area.

To create a footer area for this entry:

- Select **Footer area** from the **Insert** menu or click the **Insert document footer tool**  button on the toolbar.
- Highlight the text in the **Mapping window** that represents your document footer and release the mouse button. The footer area is displayed in green and your footer listed in the **Areas window**.



You would now set up **rules** to identify the Footer.