



## Printline or Records Mode

### Print Line Mode

#### Overview

#### Input Data

▶ Loading a Sample Input File

▶ Repagination

▶ Defining Variables

▶ **Mapping the Variables**

▶ Establishing Comparison Rules

### Records Mode

#### Overview

#### Input Data

### Pre-defined Variables

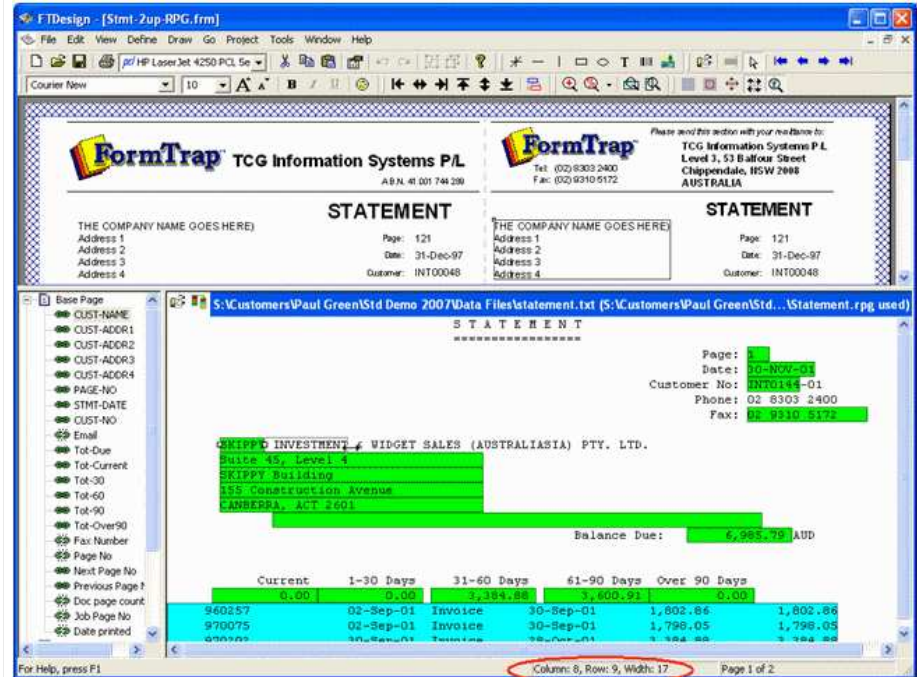
#### Pre-defined Variables

## Mapping the Variables



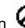


### Map using create extract button

This form of mapping is used when a field may exist but is not represented on this particular data file, Drag and Drop is preferable. Note that the position including length of the field is shown progressively in the bottom bar of the Data File Windows.



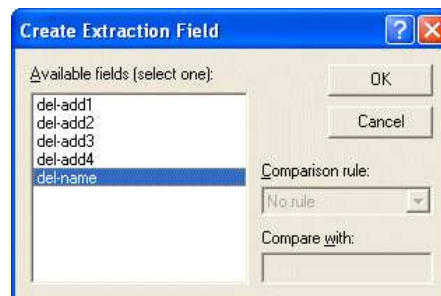
To map variable objects using the create extract field button:

Click the **Create extract** button  on the toolbar. The cursor will change to an I-bar  or stop sign  if no field is yet selected. For stop sign, select a data field name from the field list (left of the printmap work area) to change to an I-bar.

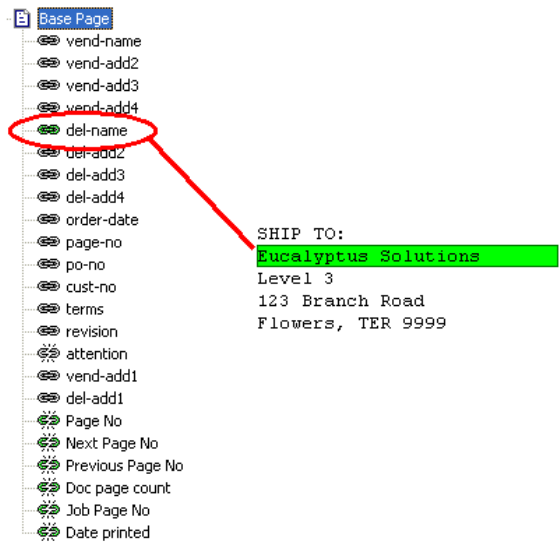
- Holding down the left mouse button, highlight the characters representing the extract field in your sample data file, displayed in the printmap window.

```
Eucalyptus Solutions
Level 3
123 Branch Road
Flowers, TER 9999
```

- Release the mouse button to open the **Create Extraction Field** dialog box.



- Select the corresponding record variable from the **Available fields** list.
- Click **OK**.
- The mapped characters will be highlighted green and the variable will be linked and highlighted on the variable list.

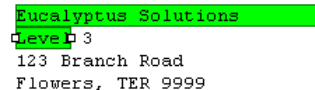


Top

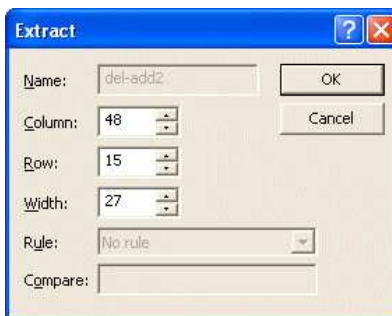
### Map using drag and drop

To map variable objects using the drag and drop method:

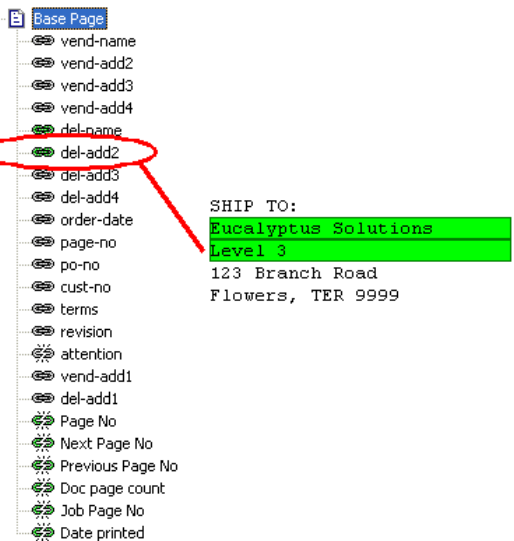
- Click to select the field you wish to map from the **Structure Map Pane**.
- Holding the left mouse button down, drag the variable and drop it on top of the characters representing the extract field in your sample data file, displayed in the printmap window.



- Left click on the field and drag to resize, or double click and change the **Column**, **Row** or **Width** values in the Extract dialog box.



- The mapped characters will be highlighted green and the variable will be linked and highlighted in the variable list.



- Repeat the above steps for all remaining variable objects on your page.

Top

