



Printline or Records Mode

Print Line Mode

▶ Overview

☒ Input Data

▶ Loading a Sample Input File

▶ Repagination

▶ Defining Variables

▶ Mapping the Variables

▶ Establishing Comparison Rules

Records Mode

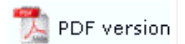
▶ Overview

☒ Input Data

Pre-defined Variables

▶ Pre-defined Variables

Defining Variables



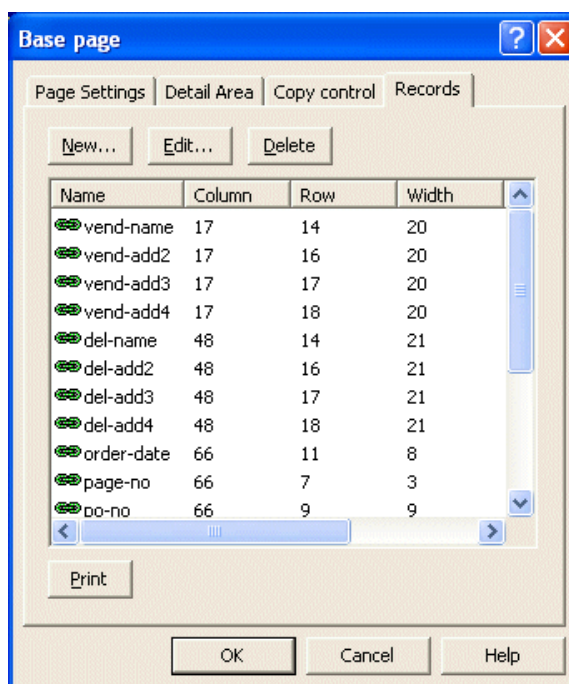
Before starting to design the layout of a Print Line mode form, you can define the variables or records that belong to each element of the form. Each record can also be defined as the variable text or barcode object is created.

After creating the variables, you need to **map the variables** to the corresponding fields in the loaded sample data.

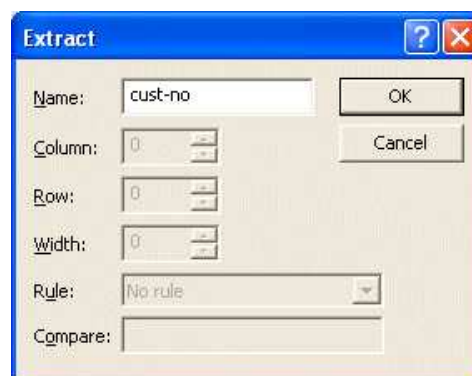
Create Record Variable

To define the record variables on each page element:

- Select the appropriate element on the **Go** menu.
- Select **Properties of...** from the **Define** menu.
- On the **Records** tab, click on the **New...** button to add a new record variable.



- Type in a record variable name, unique if the Base Page is being processed, otherwise unique to detail lines or sub-forms.



- Click the **OK** button (and press OK again to enter another new field).
- Repeat the above steps to add other record variables to the page element.

[Top](#)

Delete Record Variable

To delete an existing record variable:

- Select the appropriate element on the **Go** menu.
- Select **Properties of...** from the **Define** menu.
- On the **Records** tab, click and select the record variable you wish to delete.
- Click on the **Delete** button to delete the record variable.