



## FTSplitDef

▶ Overview

▶ Loading Data File

▣ Entry

▶ New

▶ Delete

▶ **Load**

▶ Properties

▶ Evaluation Order

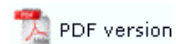
▣ Rules

▣ Options

▶ Splitting

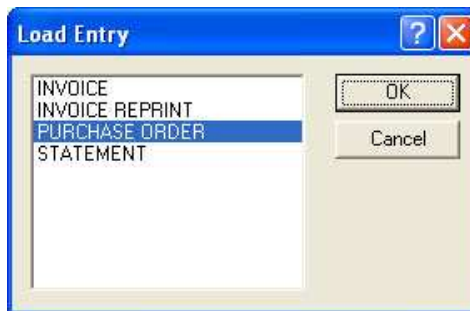
▣ Examples

### Loading an Entry



To load an entry:

- Select **Load** from the **Entry** menu.
- The **Load Entry** dialog box opens.



- Choose the entry to be loaded, and click the **OK** button.
- All the rules of the selected entry are loaded.