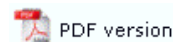




FTSplitDef

- ▶ Overview
- ▶ **Loading Data File**
- ▶ Entry
- ▶ Rules
- ▶ Options
- ▶ Splitting
- ▶ Examples

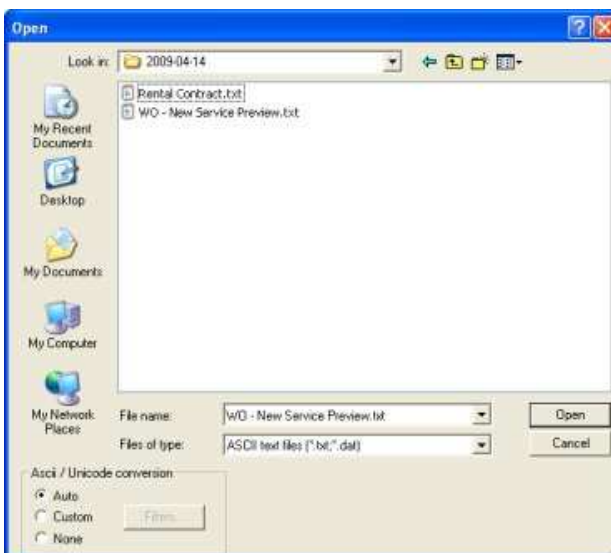
Loading Data File



Before starting on the rule file, a sample data file is loaded as a test case. The sample data must contain multiple pages or multiple documents as it is the variation across input pages that identifies the rules.

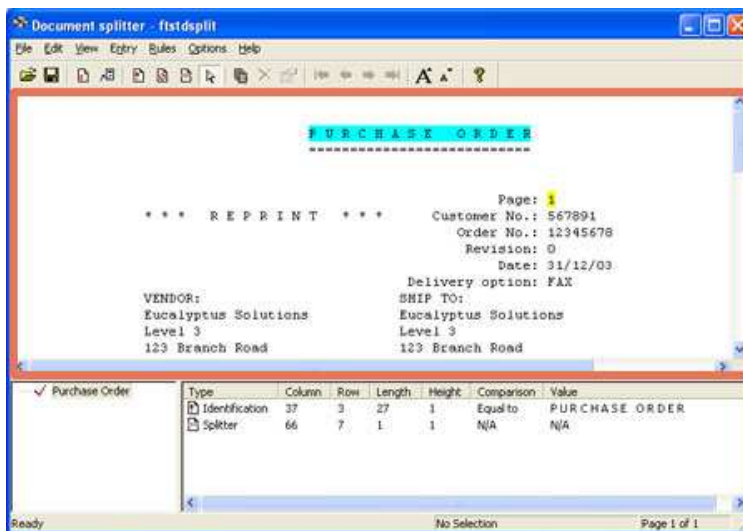
To load the sample data file:

- Select **Load Data File** from the **File** menu.



- Select the appropriate test data file in the **Open** dialog box.
- Ensure **Ascii / Unicode conversion** is **Auto**.
- Click the **Open** button.

The test data file appears in the main window of your FTSplitDef screen.



If you see an empty page, press **Home** (the first page may be just a carriage return). You will need to identify an "empty" page as **"Unwanted page"**.

If you are splitting a Records Mode file, press **Entry, Properties** and adjust **Maximum lines per page** to **1** (one).

If the second page (press **Home**) is not at the same distance from the top of the screen, then you have an unformatted file with no carriage returns in it. Press **Entry, Properties** and adjust **Maximum lines per page** to **60** and recheck using **Home**. Adjust **Maximum lines per page** until pages line up using **Home** and **Page Down**.

[Disclaimer](#) | [Home](#) | [About Us](#) | [News](#)
[Products](#) | [Customer Area](#) | [Free Trial](#) | [Success Stories](#) | [Contact Us](#)
Copyright © 1995 - 2010 TCG Information Systems Pty. Ltd. All rights reserved.