



Design and Objects

- ▶ Designing a Static Form
- ▶ Designing a Dynamic Form

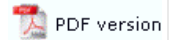
Objects

- ▣ Creating Objects
 - ▶ Line
 - ▶ Rectangle and Square
 - ▶ Ellipse and Circle
 - ▣ Image
 - ▣ Text
 - ▶ Linking to a Variable
 - ▶ **Text Substitution**
 - ▶ Associated File Text Objects
 - ▶ Symbol Characters
 - ▣ Barcode
 - ▶ Print Rule for an Object
- ▶ Deleting Objects
- ▣ Arranging Objects

Page Elements

- ▣ Creating Page Elements
- ▶ Deleting Page Elements
- ▣ Arranging Page Elements

Text Objects



FormTrap allows you to change the text and graphics that are printed on the form without amending the form itself. FormTrap's special Substitution facility permits you to insert information from external files onto the output form. Using Substitution, the one FormTrap Load File (.asc) can be used for a number of different organizations - with their specific logo and address information contained in external files and inserted during a print run. This is convenient for:

- **Customizing Forms without Rebuilding** - where a common form needs different graphics or text, the graphic/text can be replaced without re-designing forms or even requiring FTDesign.
- **Code Interpretation** - where a form requires a particular text or graphic to appear based on a code from your incoming data, the value of the data is used to access the graphic or text to be placed on the form. This can be used to translate terms in one language to another - for example units of measure.
- **Personalization and/or Additional Information (constant field)** - where a form includes a personalization or other information not supplied from the incoming file data. Company name, logo, address, PO Box, phone and fax numbers etc. are best represented this way and can be shown in various fonts/sizes and locations on many forms, with just the one location to instantly change the details.

More information on Image Substitution

More information on Barcode Substitution

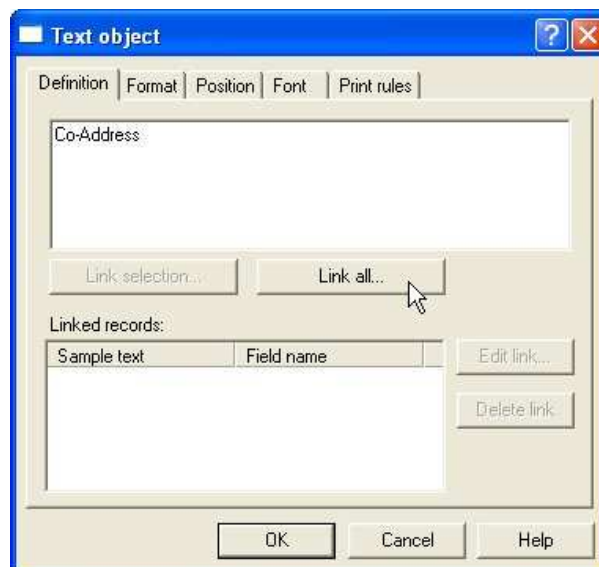
The substitution file is the external file that is opened by FormTrap at run time. Any information in the file will be inserted onto the form using the formatting and alignment applied to the substitution object.

More information on Substitution Location

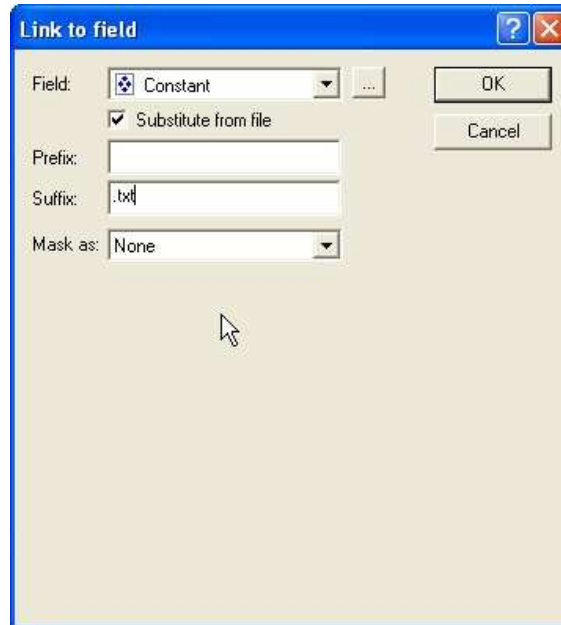
Constant Text Substitution

To insert a constant substitution text object:

- Double click on the text object created.
- On the **Definition** tab, enter the name of the substitution file into the text box.



- Click the **Link all...** button to link the sample text to the substitution file.
- In the Link to field dialog box:
 - Check the **Substitute from file** check box.
 - Select **Constant** from the **Field** drop down menu.
 - Leave the remainder blank and select **None** for **Mask as**.



- Click the **OK** button.
- In the example below FormTrap will open add.txt and insert information from the file onto the form using the formatting and alignment applied to the substitution text object.

More information on Substitution Location

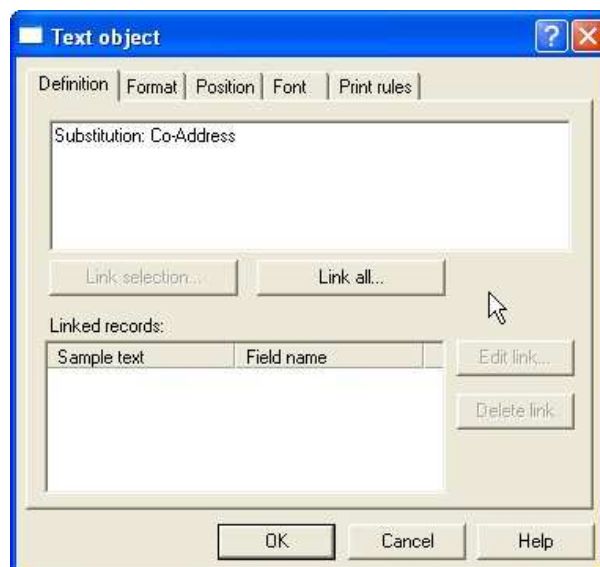
Return this part with your remittance to:	Return this part with your remittance to:
add	Accounts Payable Department of Finance 99 FormTrap St. FormTrap 9999
At run-time, the constant substitution text object will insert the data from the substitution text file	The data from the text files will appear on the print out of the form, using the format and alignment applied to the substitution text object.

Top

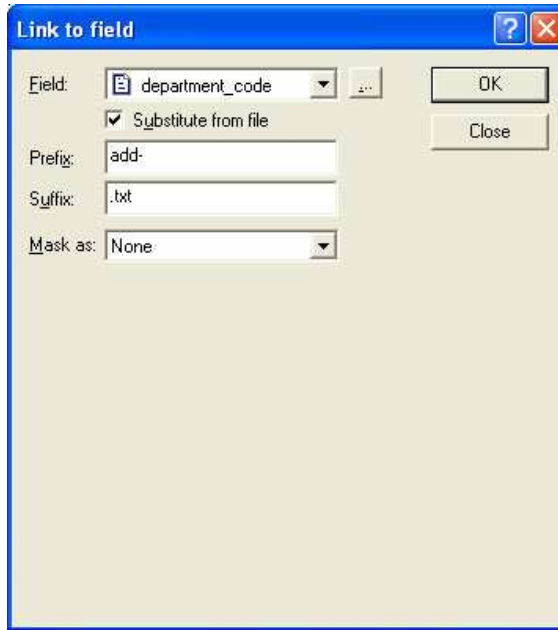
Variable Text Substitution

To insert a variable substitution text object:

- Double click on the text object created.
- On the **Definition** tab, enter sample text into the text box. When creating substitution text objects it is best to make the sample text the maximum possible length of the field extracted from the substitution file.



- Click the **Link all...** button to link the sample text to the record variable.
- In the **Link to field** dialog box:
 - Check the **Substitute from file** check box.
 - Select the appropriate variable from the **Field** drop down menu.
 - Enter the prefix of the variable substitution files into **Prefix** e.g. add-.
 - Enter the extension of the variable substitution files into **Suffix** e.g. .txt (including the dot).



- Click the **OK** button.
- In the example below FormTrap will open add-001.txt and insert information from the file onto the form using the formatting and alignment applied to the substitution text object.

Note on the File Name: The linked "field" portion of the file name is automatically left and right stripped of spaces

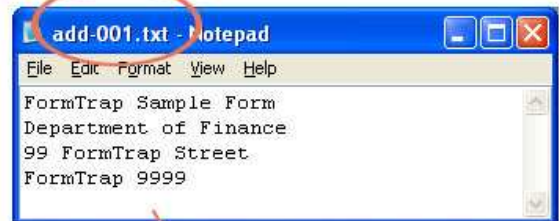
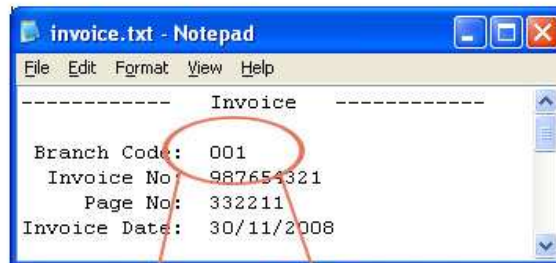
Field content (>field<) File Name Accessed

> 001< add-001.txt

> 001 < add-001.txt

>001 < add-001.txt

More information on Substitution Location



Substitution: Company Address

Substitution Variable

FormTrap Sample Form
Department of Finance
99 FormTrap St.
FormTrap 9999

Output on the Form

