



Design and Objects

- ▶ Designing a Static Form
- ▶ Designing a Dynamic Form

Objects

Creating Objects

- ▶ Line
- ▶ Rectangle and Square
- ▶ Ellipse and Circle
- ▶ Image
- ▶ Text
 - ▶ Linking to a Variable
 - ▶ Text Substitution
 - ▶ Associated File Text Objects
 - ▶ **Symbol Characters**
- ▶ Barcode
- ▶ Print Rule for an Object

Deleting Objects

Arranging Objects

Page Elements

- ▶ Creating Page Elements
- ▶ Deleting Page Elements
- ▶ Arranging Page Elements

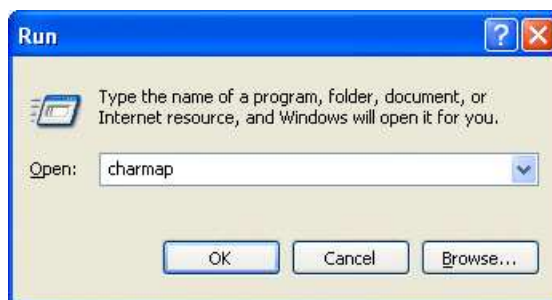
Text Objects



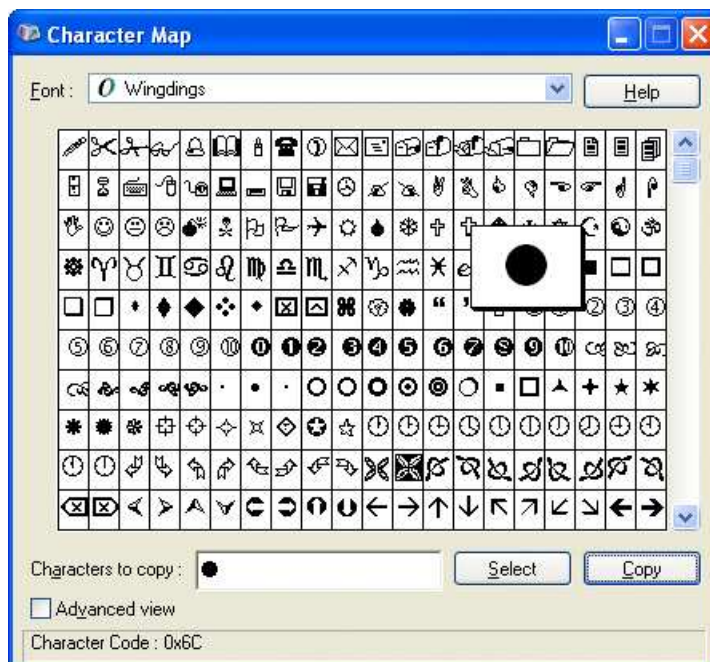
To add a symbol character in FTDesign:

Copy Symbol in Character Map

- Open Windows Character Map. Select **Start Menu > Run >** and type "charmap"



- Click OK

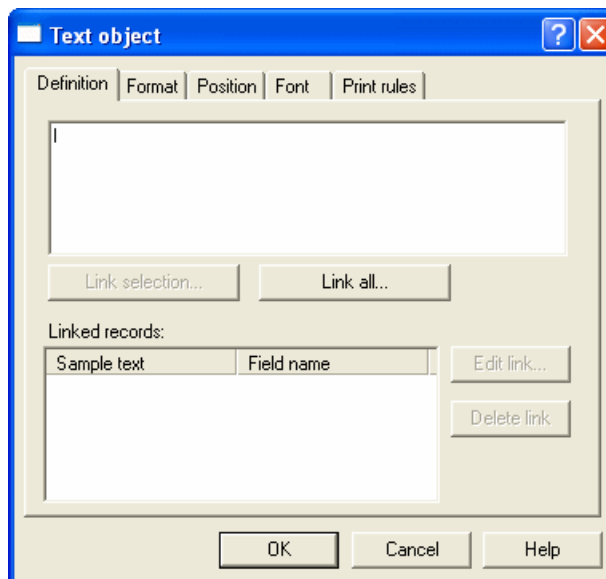


- In Character Map mark the required symbol and press Select, then Copy.

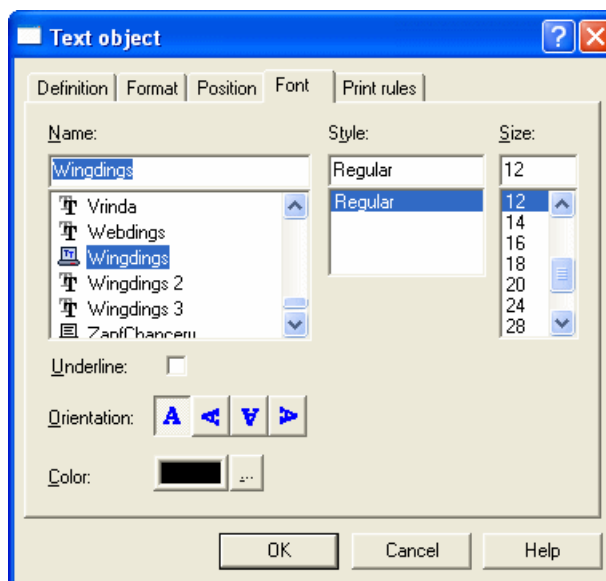
[Top](#)

Insert Symbol in FTDesign

- Create a new text object.
- Paste (CTRL + V) the symbol in the definition tab.



- On the Font tab, select the same font as was used in Character Map.

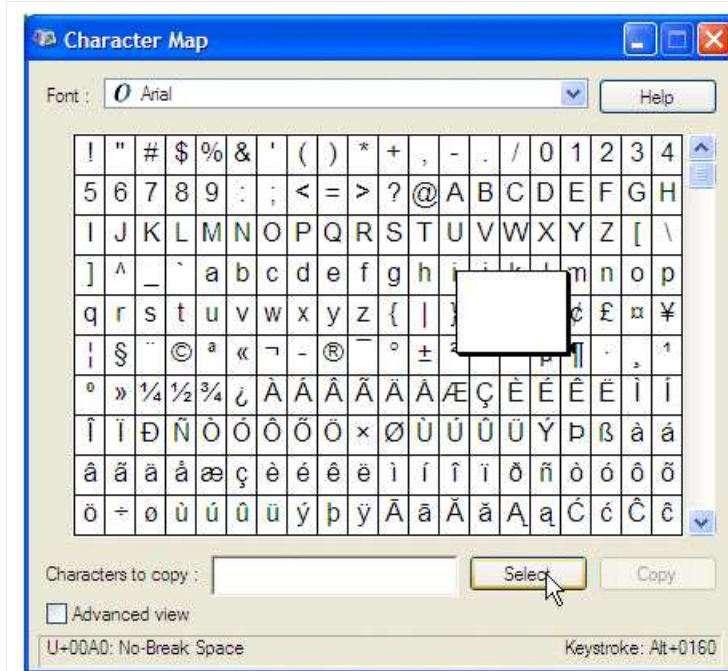


- Click OK.

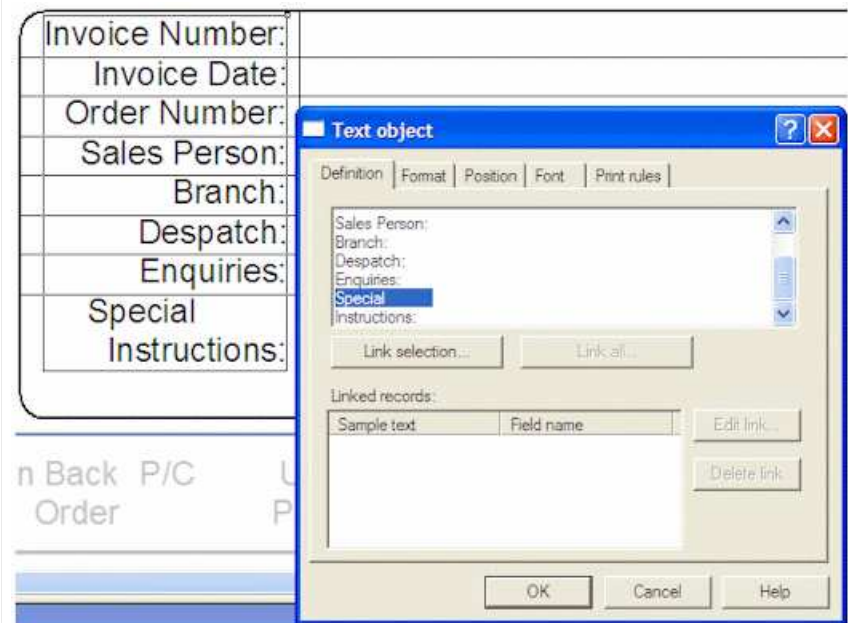
Note: The character may not appear correctly in the definition tab, nor on the form design, but will print correctly.

Using the Non-Breaking Space to "Push" Right-Aligned Text to the Left

You can insert non-breaking spaces behind a text object to "push" a right-aligned object to the left. The Character Map symbol is Hex 160 and should be selected prior to selecting **Copy**.



This is the FTDesign text object showing trailing non-breaking spaces inserted behind "Special" (using Ctrl+V) to give the effect shown in the text behind the window.



Top