



Design and Objects

- ▶ Designing a Static Form
- ▶ Designing a Dynamic Form

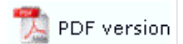
Objects

- ▣ Creating Objects
 - ▶ Line
 - ▶ Rectangle and Square
 - ▶ Ellipse and Circle
 - ▣ Image
 - ▶ **Image Substitution**
 - ▣ Text
 - ▣ Barcode
 - ▶ Print Rule for an Object
- ▶ Deleting Objects
- ▣ Arranging Objects

Page Elements

- ▣ Creating Page Elements
- ▶ Deleting Page Elements
- ▣ Arranging Page Elements

Image Objects



FormTrap allows you to change the text and graphics that are printed on the form without amending the form itself. FormTrap's special Substitution facility permits you to insert information from external files onto the output form. Using Substitution, the one FormTrap Load File (.asc) can be used for a number of different organizations - with their specific logo and address information contained in external files and inserted during a print run. This is convenient for:

- **Customizing Forms without Rebuilding** - where a common form needs different graphics or text, the graphic/text can be replaced without re-designing forms or even requiring FTDesign.
- **Code Interpretation** - where a form requires a particular text or graphic to appear based on a code from your incoming data, the value of the data is used to access the graphic or text to be placed on the form.
- **Personalization and/or Additional Information (constant field)** - where a form includes a personalization or other information not supplied from the incoming file data. Company name, logo, address, PO Box, phone and fax number etc. are best represented this way and can be shown in various fonts/sizes and locations on many forms, with just the one location to instantly change the details.

More information on Barcode Substitution

More information on Text Substitution

The substitution file is the external file that is opened by FormTrap at run time. Any information in the file will be inserted onto the form using the formatting and alignment applied to the substitution object.

More information on Substitution Location

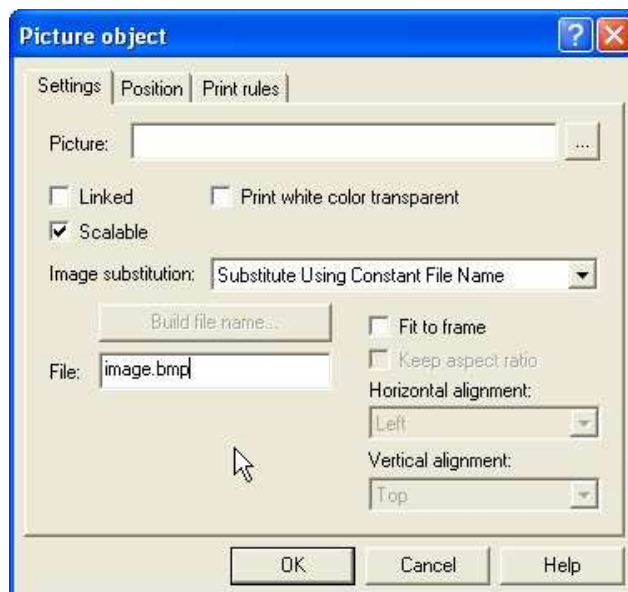
Constant Image Substitution

To insert a constant substitution image object:

- Double click on the image object created.
- On the **Settings** tab, enter the name of the substitution file into the text box.
 - Select **Substitute Using Constant File Name** from the **Image substitution** dropdown menu.
 - Enter the full name of the image e.g. image.jpg, you wish to substitute into the **File** text box.
 - Check the **Fit to frame** check box to force the image to resize to fit the allocated image box on the form.

Note: This is inefficient, for commonly used graphics, please scale and save a right-sized image in the substitution file.

- Check the **Keep aspect ratio** box to maintain the proportions of the inserted image.
- Use the **Horizontal alignment** and **Vertical alignment** to align the inserted image within the allocated image box.



- Click the **OK** button.
- Resize the grey substitution image box to fit the allocated space on the form.
- In the example below FormTrap will open image.jpg and insert the image from the file onto the form using the formatting and alignment applied to the

substitution image object.

More information on Substitution Location



FormTrap Form

At run-time, the constant substitution image object will insert the image from the specified substitution image file.



FormTrap Form

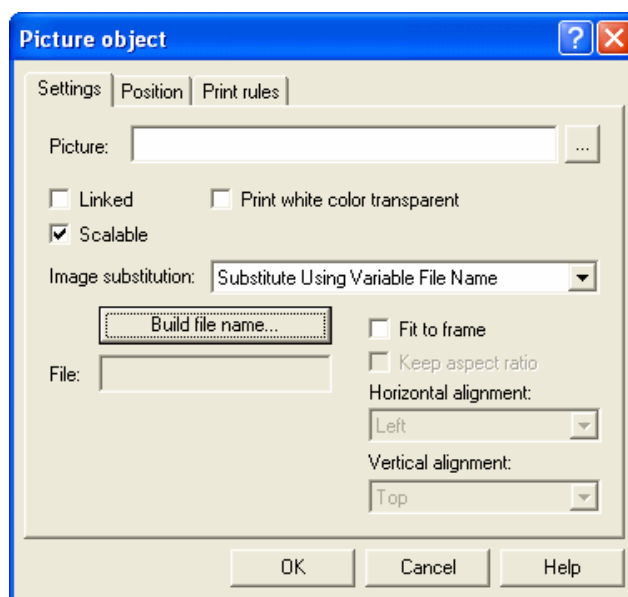
The image will appear on the print out of the form, using the alignment applied to the substitution image object.

[Top](#)

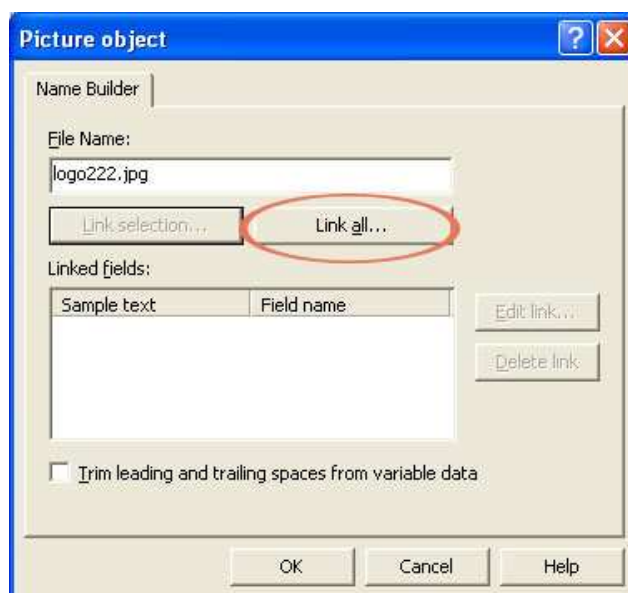
Variable Image Substitution

To insert a variable substitution image object:

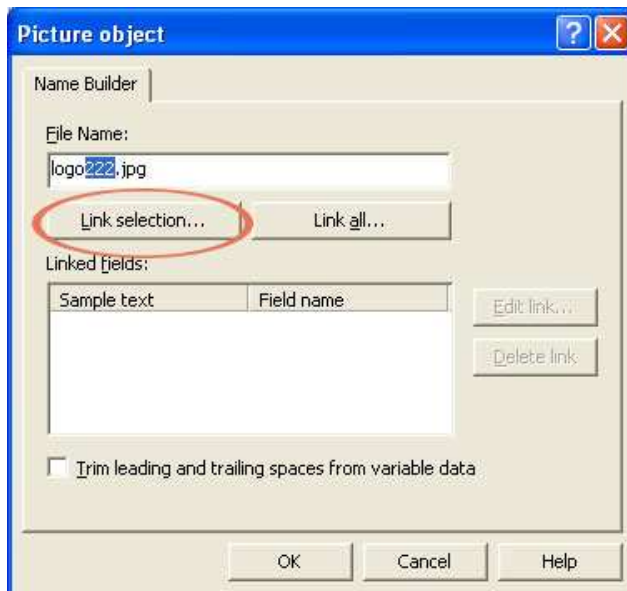
- Double click on the image object created.
- On the **Settings** tab, select **Substitute Using Variable File Name** from the **Image substitution** dropdown menu.



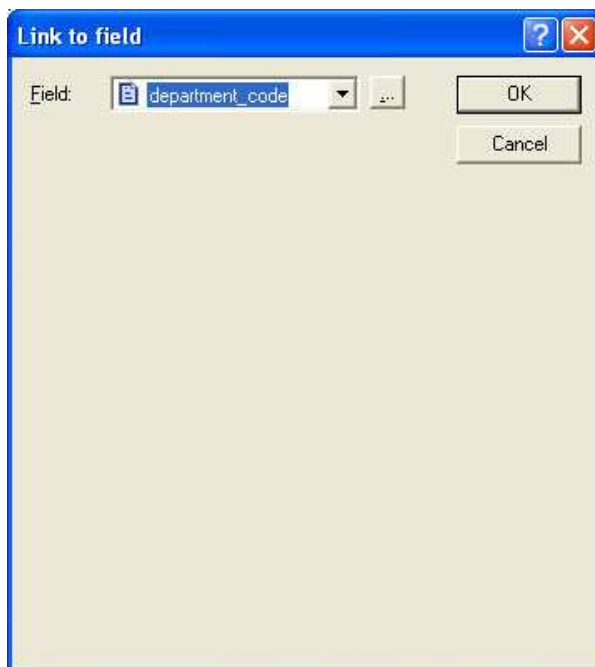
- Click the **Build file name...** button to create the variable file name.
- On the **Name Builder** tab enter the sample text into the **File Name** text box.



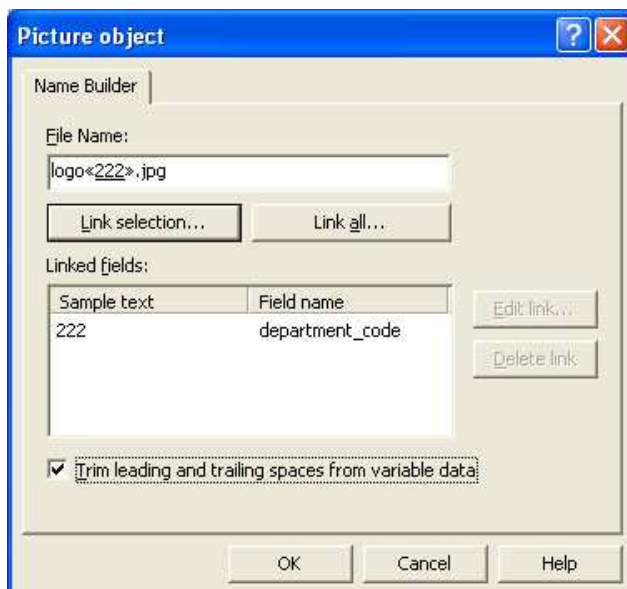
- To link all the sample text to the variable, click on the **Link all...** button. To link a section of the sample text to the variable, highlight the relevant text and click the **Link selection...** button.



- In the **Link to field** dialog box, select the predefined field name from the **Field** drop down menu.

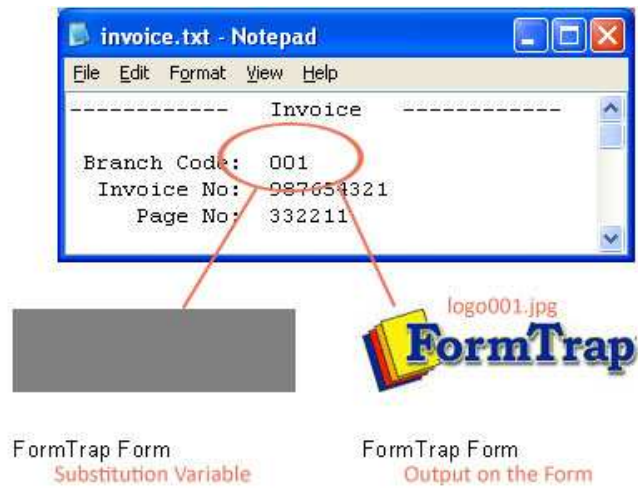


- Click **OK** to link the record variable to the substitution object.
- Check the **Trim leading and trailing spaces from variable data** to remove leading or trailing spaces from the file name.



- Click the **OK** button.
- In the example below FormTrap will open logo001.jpg and insert the image from the file onto the form using the alignment applied to the substitution image object.

More information on Substitution Location



[Top](#)