



Design and Objects

- ▶ Designing a Static Form
- ▶ Designing a Dynamic Form

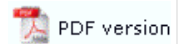
Objects

- ✚ Creating Objects
- ▶ Deleting Objects
- ✚ Arranging Objects

Page Elements

- ✚ Creating Page Elements
 - ▶ Base Page
 - ▶ Detail Area
 - ▶ **Detail Lines**
 - ▶ Sub-forms
 - ▶ Group Headers
 - ▶ Report Header and Footer
 - ▶ Page Header and Footer
 - ▶ First Page Footer
 - ▶ Second Page Footer
 - ▶ Carried Forward and Brought Forward
 - ▶ The Accumulative Field
- ▶ Deleting Page Elements
- ✚ Arranging Page Elements

Creating Page Elements



Detail Lines

Detail lines represent the repeating information in a form, which may be of different structures. In an Invoice you may have product lines, comment lines, tax lines and so on, all are detail lines.

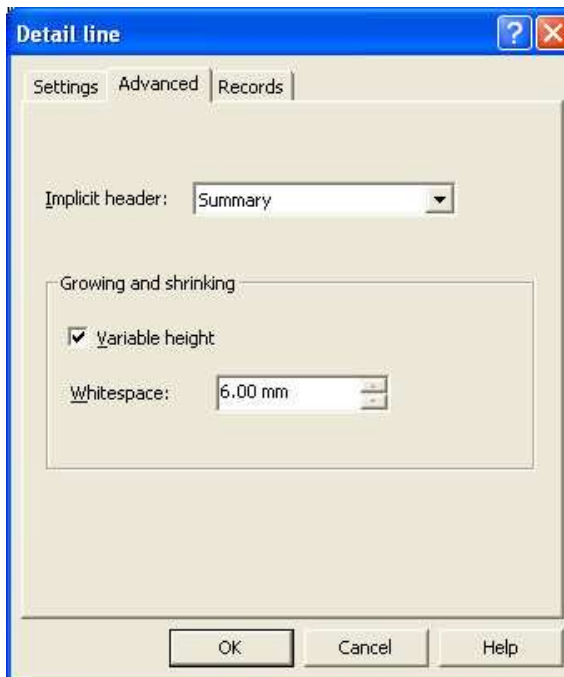
To define a Detail Line:

- Select **Add detail line** from the **Define** menu.
- On the **Settings** tab set:
 - **Name** - the name is used as a reference for the detail line.
 - **Height** - set the height of the detail line to accommodate the text objects that represent the detail information and any formatting objects such as extra lines or boxes.
 - **Page break before** - a new page is generated before the detail line prints (used for internal detail-level headers within the document).
 - **Page break after** - a new page is generated after the detail line prints (used when totals other than document totals are included within the detail lines).
 - **Widow/Orphan** - the widow/orphan value defines the minimum amount of remaining space that must be available at run-time in the Detail Area in order for the detail line to be printed. If the available space is less than the space required by the widow/orphan value, the detail line will not be printed on this page and will instead be carried to the next page. This is used for within-detail-area structures so as not to show just a header and/or total on a page by itself.
 - **Record mode identifier** - a letter of the alphabet (uppercase) used to uniquely identify the detail line (only applicable in Records Mode).

- On the **Advanced** tab:
 - **Implicit header** - an existing implicit header can be associated with the detail line. When the assigned detail line is first found in the data the implicit group header prints the table object for that group of detail lines, before printing the associated detail line.
 - **Growing and Shrinking** - detail lines can be defined to dynamically resize at run-time in order to accommodate variable text or other objects within the detail. This is most useful when text objects on the detail contain multiple fields, which can result in paragraphs with a varying number of lines, depending on the input data.

Detail lines defined as being of variable size can also have an arbitrary amount of white space set to follow the printed detail. For example, this feature ensures a consistent space between paragraphs on a letter form.

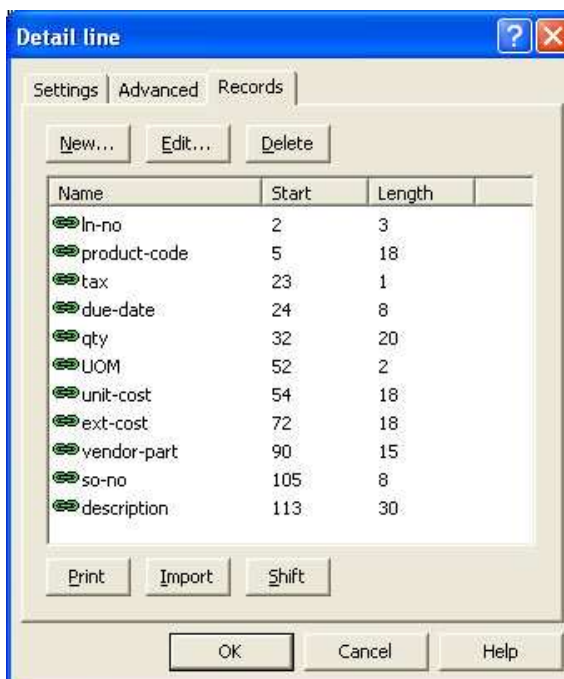
Tick the **Variable height** checkbox and enter a value in the **White space** text box. This creates a margin between the current detail line and the next detail line.



- On the **Records** tab, define the fields for this detail line. FormTrap can then properly extract the data from the input file.

[More information on Defining Fields in Print Line Mode](#)

[More information on Defining Fields in Records Mode](#)



[Top](#)

Widows and Orphans

These terms relate to headings with nothing following on the bottom of a page (Widow) and totals at the top of a page (Orphan) and both are considered bad practice by form designers.

To illustrate, let's look at a within-page set of calculations as shown below:

Operation	Units
Set bed of recorder	0.75
Install recorder	0.50
Test standard weights and adjust	1.50
Total	2.75

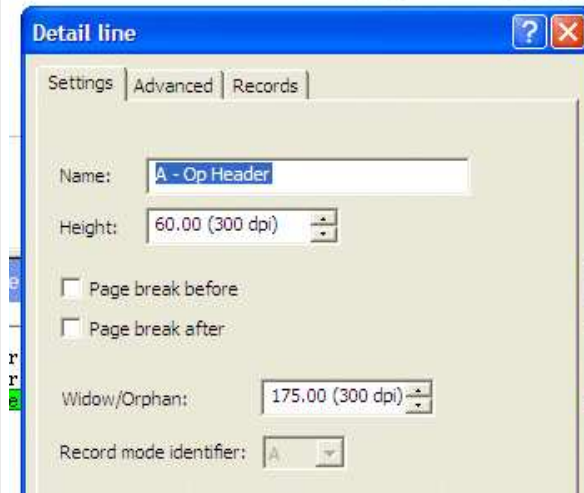
Where this spans a page, we want at least one detail following the heading and at least one detail preceding a total. Let's assume the heights of the contents are (in 1/300th increments):

Heading	65
Detail	50
Total	60

The minimum record set is one each of Header, Detail and Total, however more detail records may be found in different forms.

This is how we set Widow/Orphan:

Operation	Units
Operation	12.34
Total	23.45



Header is set to Widow/Orphan of 175, being the three heights. If there is less than 175 left on the page, the entire set starts on the next page.

Detail is set to 110, being the height of Detail and Total. If there is less than 110 left on the page, this detail is printed on the next page.

Total is set to 0, as the preceding records have now accounted for the end of page correctly.

[Top](#)