



Design and Objects

- ▶ Designing a Static Form
- ▶ Designing a Dynamic Form

Objects

Creating Objects

- ▶ Line
- ▶ Rectangle and Square
- ▶ Ellipse and Circle
- + Image
- + Text
- **Barcode**
 - ▶ Linking to a Field
 - ▶ Barcode Substitution
 - ▶ EAN/UPC-128, PDF 417 & Aust DPIP
 - ▶ Print Rule for an Object

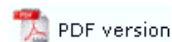
Deleting Objects

Arranging Objects

Page Elements

- + Creating Page Elements
- ▶ Deleting Page Elements
- + Arranging Page Elements

Creating Objects

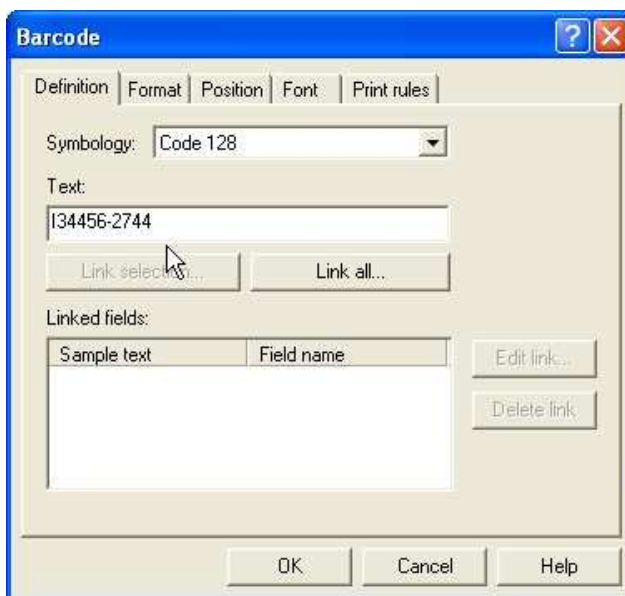


|||| The **Barcode tool** is used to insert a constant or variable barcode object.

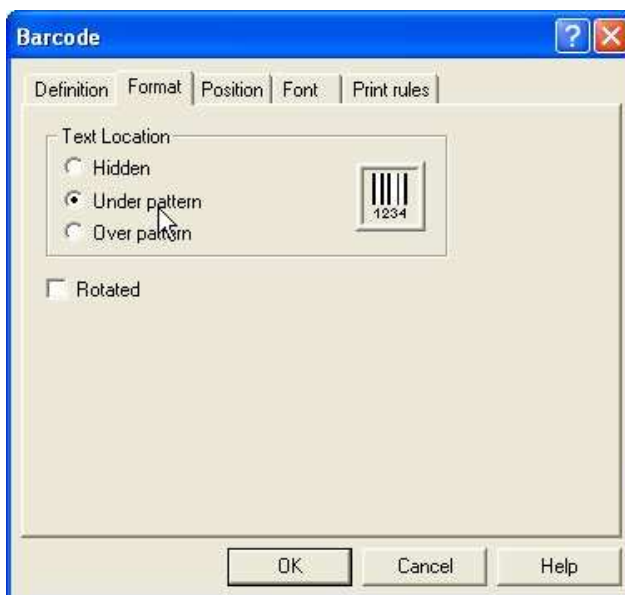
Creating Barcode Objects

To insert a barcode object in FTDesign:

- Choose **Barcode** from the **Insert** menu or click the **Barcode tool** button on the toolbar. The cursor changes to a cross-hair pointer.
- Click and drag the mouse diagonally to add the barcode frame.
- Release the mouse button and the **Barcode** dialog box will open.
- On the **Definition** tab
 - **Symbology** - select the appropriate barcode encoding method from the **Symbology** menu.
 - **Text** - enter the desired barcode value into the **Text** box. Click the **Link selection** or **Link all** button to **define a variable text object**.

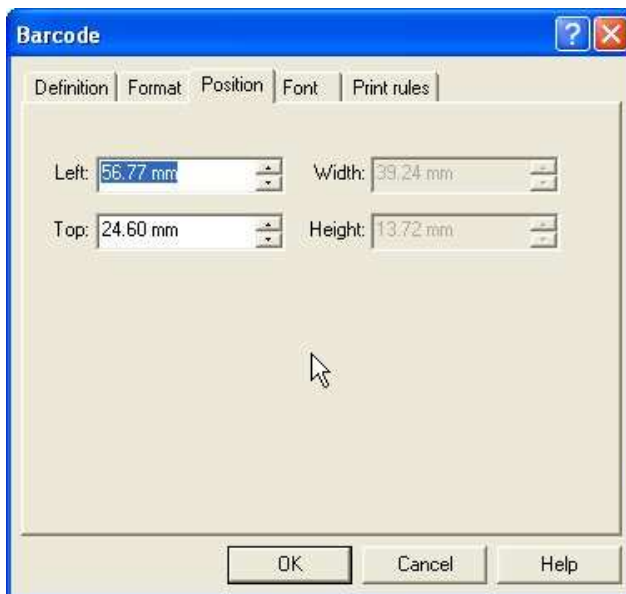


- On the **Format** tab, set the attributes of the constant barcode object:
 - **Text location** - the value of the barcode can be hidden, or appear above or below the barcode.
 - **Rotated** - check the Rotated box for the barcode to be rotated 90 degrees.

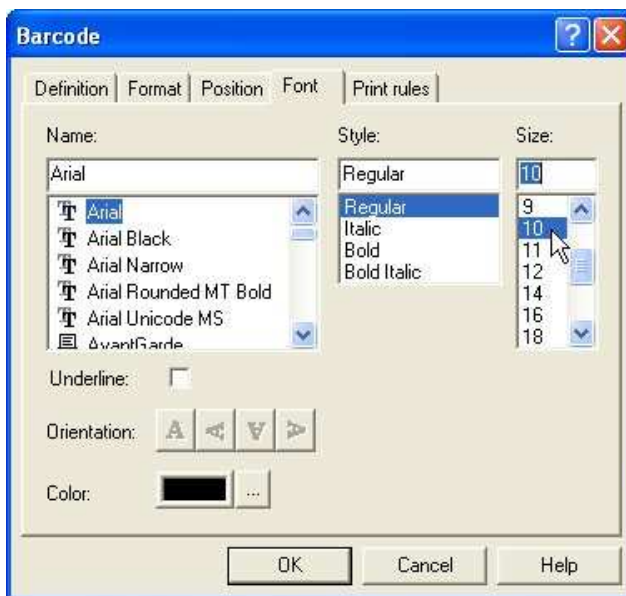


- On the **Position** tab, set the position of the constant barcode object. Enter a

value in **Left**, for the object's offset from left value and **Top**, for the object's offset from top value.



- On the **Font** tab, set the attributes of the font used for the constant barcode object:
 - **Name** - select the font type.
 - **Style** - font can be Regular, Bold, Italic or Bold Italic.
 - **Size** - select the size of the font.
 - **Underline** - check the Underline box for the text to be underlined.
 - **Orientation** - orientation of the text relative to the page.
 - **Color** - select the color of the text.



The Print rules tab allows conditions to be set for printing of this object, see **Print Rule for an object**.

To change the size of the selected barcode object:

- Select the handles and drag to size. The width of the barcode "jumps" from size to size as additional increments are added to all bars and spaces. The height handles move smoothly as the height is increased or reduced.

[Top](#)