



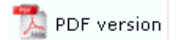
Design and Objects

- ▶ Designing a Static Form
- ▶ Designing a Dynamic Form

Objects

- ▣ Creating Objects
 - ▶ Line
 - ▶ Rectangle and Square
 - ▶ Ellipse and Circle
 - ▣ Image
 - ▣ Text
 - ▣ Barcode
 - ▶ Linking to a Variable
 - ▶ **Barcode Substitution**
 - ▶ EAN/UPC-128, PDF 417 & Aust DPIIP
 - ▶ Print Rule for an Object
 - ▶ Deleting Objects
 - ▣ Arranging Objects
- ### Page Elements
- ▣ Creating Page Elements
 - ▶ Deleting Page Elements
 - ▣ Arranging Page Elements

Barcode Objects



Barcode substitutions are almost never used, however are possible using the same instructions as text objects.

More information on Image Substitution

More information on Text Substitution

The substitution file is the external file that is opened by FormTrap at run time. Any information in the file will be inserted onto the form using the formatting and alignment applied to the substitution object.

More information on Substitution Location

Constant Barcode Substitution

To insert a constant substitution barcode object:

- Double click on the barcode object created.
- On the **Definition** tab, enter the name of the substitution file into the text box.

The image shows the 'Barcode' dialog box with the 'Definition' tab selected. The 'Symbology' dropdown is set to 'Code 128'. The 'Text' field contains '9999'. There are two buttons: 'Link selection...' and 'Link all...'. Below, there is a 'Linked fields' section with a table:

Sample text	Field name

Buttons for 'Edit link...' and 'Delete link' are to the right of the table. At the bottom are 'OK', 'Cancel', and 'Help' buttons.

- Click the **Link all...** button to link the sample barcode digits to the substitution file.
- In the **Link to field** dialog box:
 - Check the **Substitute from file** check box.
 - Select **Constant** from the **Field** drop down menu.
 - Leave the remainder blank and select **None** for **Mask as**.

The image shows the 'Link to field' dialog box. The 'Field' dropdown is set to 'Constant'. The 'Substitute from file' checkbox is checked. The 'Prefix' field is empty. The 'Suffix' field contains '.txt'. The 'Mask as' dropdown is set to 'None'. There are 'OK' and 'Cancel' buttons at the top right.

- Click the **OK** button.
- In the example below FormTrap will open 9999.txt and insert information from the file

onto the form using the formatting and alignment applied to the substitution barcode object.

More information on Substitution Location

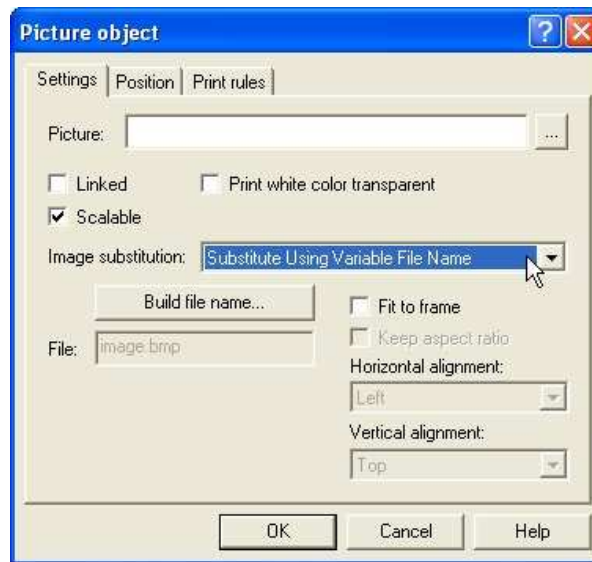


[Top](#)

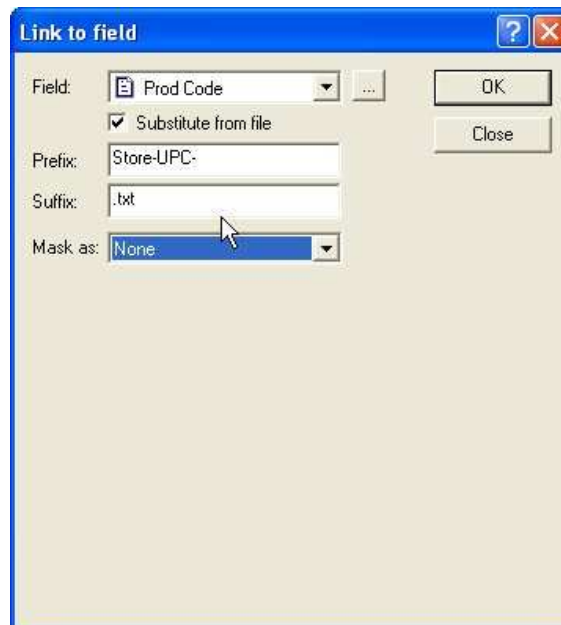
Variable Barcode Substitution

To insert a variable substitution barcode object:

- Double click on the barcode object created.
- On the **Definition** tab, enter sample barcode digits into the text box. It is best to make the sample barcode digits the same length as the field extracted from the substitution file.



- Click the **Link all...** button to link the sample barcode digits to the record variable.
- In the **Link to field** dialog box:
 - Check the **Substitute from file** check box.
 - Select the appropriate variable from the **Field** drop down menu.
 - Enter the prefix of the variable substitution files into **Prefix** e.g. barcode-.
 - Enter the extension of the variable substitution files into **Suffix** e.g. .txt (including the dot).



- Click the **OK** button.
- In the example below FormTrap will open barcode-987654321.txt and insert information from the file onto the form using the formatting and alignment applied to the substitution barcode object.

Note on the File Name: The linked "field" portion of the file name is automatically left and right stripped of spaces

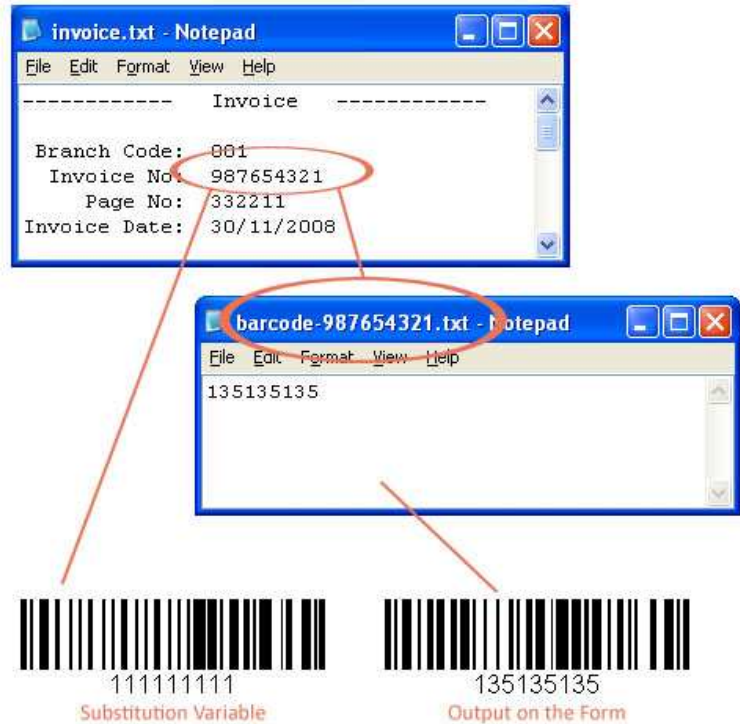
Field content (>field<) File Name Accessed

> 987654321< barcode-987654321.txt

> 987654321 < barcode-987654321.txt

>987654321 < barcode-987654321.txt

More information on Substitution Location



[Top](#)