



Enterprise Manual V7.5

[Connection](#) | [Queues](#) | [Data Folders](#) | [Archive](#) | **Setup** | [Submit](#)
[Associated Files](#) | [Other Add-ons](#) | [Related Batch Processes](#) | [Special Forms](#)

[Full PDF Manual](#)
[FTDesign Manual V7.2](#)
[I'm Stuck!](#)

Setup

- ▶ Core Components
- ▶ Archive
- ▶ Settings
- ▶ Filters
- ▶ Run
- ▶ Users

Data Input

- ▶ File System
- ▶ **LP (Line Printer)**
- ▶ Named Pipes

Delivery

- ▶ Print Servers
- ▶ Printer Licensing
- ▶ Email
- ▶ Application
- ▶ Delivery Monitor

Troubleshooting

- ▶ Login Credentials

LP (Line Printer)

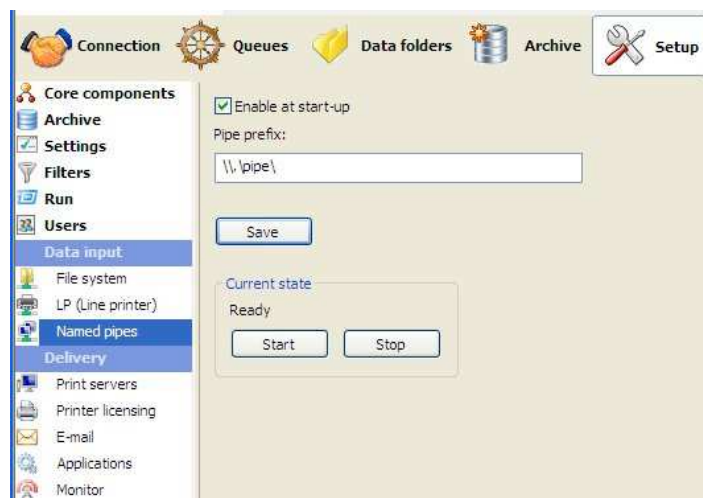
This option allows FTSpooler to listen for print requests from LPR clients (via the Line Printer Protocol) and to act as the Print Server (LPD). FTSpooler also acts as a print server to requests coming from a Work Station Customisation Object from AS/400 computers.

To configure FTSpooler to act as an LP server:

- Tick the **Enable at start-up** checkbox.
 You need to **Stop and Start** as below for this to take effect.
- Specify the port number to avoid Windows/UNIX conflicts. The port may be changed to support client applications that use non-standard port numbers to send print requests. Usually this option will not be changed with the default port number (515) used by the Print Daemon. **Contact Us** for more information on this feature.
- Click the **Save** button.

Start or Stop and **Start** the (File System/LP/Named Pipes) input service and check **Current state** is **Ready**.

More information on Submit Queue via Line Printer



Top

[Disclaimer](#) | [Home](#) | [About Us](#) | [News](#) | [Products](#) | [Customers](#) | [Free Trial](#) | [Contact Us](#) | [Success Stories](#)

Copyright 1995-2011 TCG Information Systems Pty. Ltd. All rights reserved.