



## Enterprise Manual V7.5

[Connection](#) | [Queues](#) | [Data Folders](#) | [Archive](#) | **Setup** | [Submit](#)  
[Associated Files](#) | [Other Add-ons](#) | [Related Batch Processes](#) | [Special Forms](#)

[Full PDF Manual](#)  
[FTDesign Manual V7.2](#)  
[I'm Stuck!](#)

### Setup

- ▶ Core Components
- ▶ Archive
- ▶ Settings
- ▶ Filters
- ▶ Run
- ▶ Users

### Data Input

- ▶ **File System**
- ▶ LP (Line Printer)
- ▶ Named Pipes

### Delivery

- ▶ Print Servers
- ▶ Printer Licensing
- ▶ Email
- ▶ Application
- ▶ Delivery Monitor

### Troubleshooting

- ▶ Login Credentials

### File System

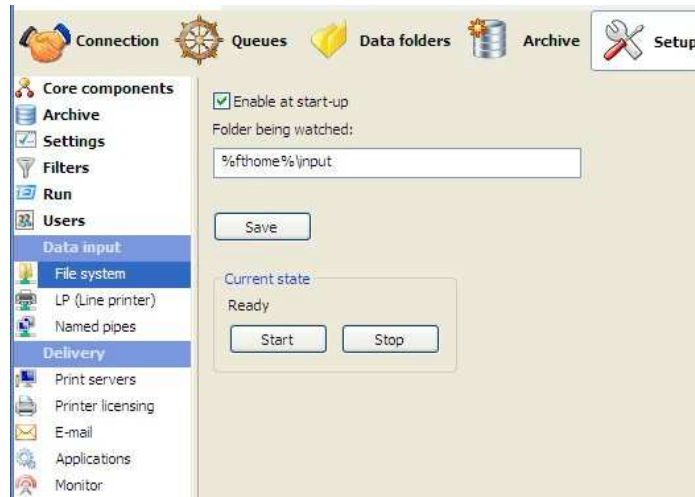
This option allows the user's application or a copy statement to write a file directly to the queue folder.

To configure the file system option:

- Tick the **Enable at start-up** checkbox to enable the file system option at FTSpooler start-up.  
You need to Stop and Start as below for this to take effect.
- Alter the location of the **Folder being watched** if required.
- Click the **Save** button.

**Start or Stop** and **Start** the service and check **Current state** is **Ready**.

**More information on Submit Queue via Network**



[Top](#)

[Disclaimer](#) | [Home](#) | [About Us](#) | [News](#) | [Products](#) | [Customers](#) | [Free Trial](#) | [Contact Us](#) | [Success Stories](#)

Copyright 1995-2011 TCG Information Systems Pty. Ltd. All rights reserved.