



PDF version

Enterprise Manual V7.5

[Connection](#) | [Queues](#) | [Data Folders](#) | [Archive](#) | [Setup](#) | [Submit](#)
[Associated Files](#) | [Other Add-ons](#) | **[Related Batch Processes](#)** | [Special Forms](#)

Related Batch Programs

- ▶ [Version Upgrade](#)
- ▶ [Home Locator](#)
- ▶ [Settings Merger](#)

Registry Update to FormTrap Spooler

- ▶ [Registry Update](#)

Related Batch Programs

These separately-run programs update system information.

Home Locator changes the folder for the Spooler-specific files (indicated by "fthome") and is normally changed to a separate drive as archive information becomes more extensive than originally planned.

Settings Merger updates system files in response to a file sent from FormTrap Support and Sales. This is normally number of printers upgrades, but may include the client name where the client advises a change in ownership.

Version Upgrade is run when updating to differently numbered version of FormTrap Spooler (eg v6 to v7).

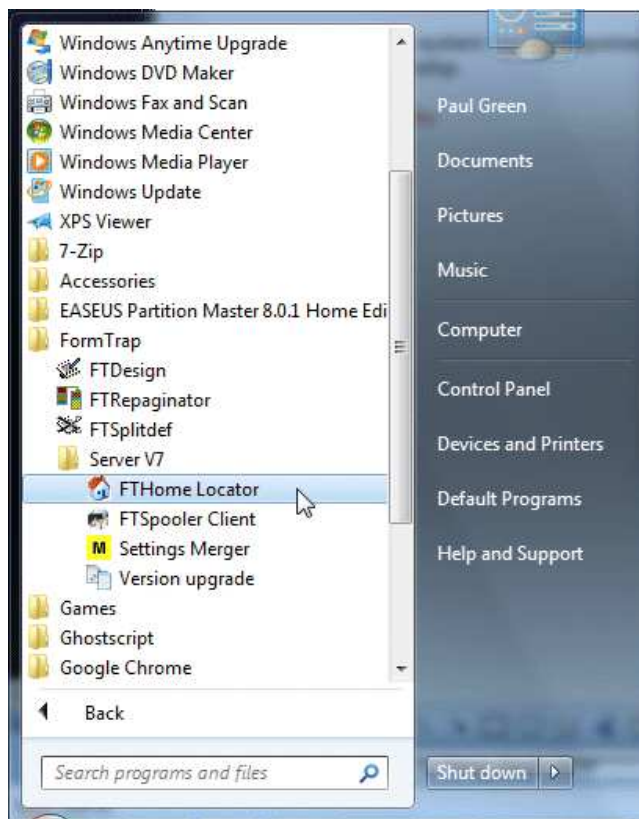
Home Locator

Home Locator changes the address of the Spooler files and FireBird DB.

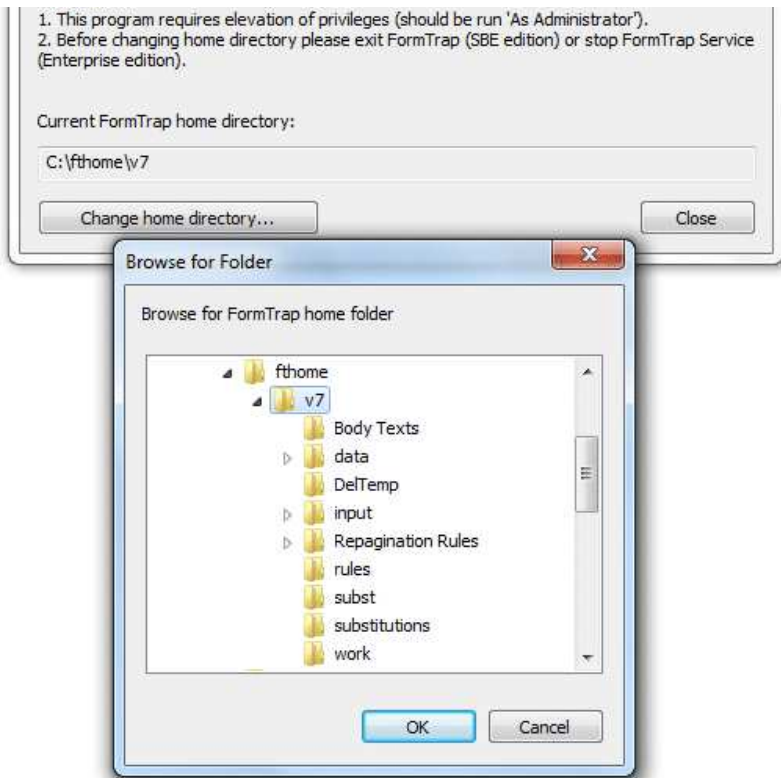
Before running Home Locator, please do the following:

- (optionally) run **Setup, Archive, Backup** and **Restore** to compress the DB back to the current record limit.
- From **Control Panel, Administrative Tools, Services**, stop **FormTrap Server** and **FireBird** (in that order).
- Copy the folder **C:\fthome\v7** to its required new location.

Home Locator is contained in the **FormTrap, Spooler** program group:



This window opens, showing the address of the current "fthome" folder. Select **Change home directory...** and select the new "fthome" folder.



Restart **FireBird** and **FormTrap Server** (in that order).

[Top](#)

[Disclaimer](#) | [Home](#) | [About Us](#) | [News](#) | [Products](#) | [Customers](#) | [Free Trial](#) | [Contact Us](#) | [Success Stories](#)

Copyright © 1995-2011 TCG Information Systems Pty. Ltd. All rights reserved.