



## Enterprise Manual V7.5

[Connection](#) | [Queues](#) | [Data Folders](#) | [Archive](#) | [Setup](#) | [Submit](#)  
[Associated Files](#) | [Other Add-ons](#) | [Related Batch Processes](#) | [Special Forms](#)

F  
F  
I

### Queue Setup

- ▶ [What is a Queue](#)
- ▶ [Create a Queue](#)
- ▶ [Delete a Queue](#)
- ▶ [Queue Properties](#)
- ▶ [Print to ANY Windows Printer](#)
- ▶ [Tools](#)

#### Print to ANY Windows Printer

##### Overview

This facility is only available for PCLXL (PCL6) files where the "Print to ANY Windows Printer" chargeable option is included in their FormTrap system. Files must be generated through a queue with a Data File showing the PCLXL (PCL6) symbol. [pdf](#)

To print to other Windows printers, use a filter for each different printer you want to print to.

The table shows relative file sizes from which the demands of the process, especially for PostScript, is shown. Converted files are larger by a factor of 20 - 30 over the equivalent direct outputs, although the PDF file produced from PostScript is still small and efficient.

A four page "Accounts Report" formatted with FormTrap in Arial True Type font, compressed down from a seven page original was used as the text file. The form file and data files may be downloaded from here:

Download [PCLXL-to-Any-Windows.zip](#)

Printer used is an HP Color LaserJet 4600 printed in B&W with no logos:

| Print Language      | File size - Bytes |
|---------------------|-------------------|
| Original Text File  | 34,025            |
| PCL5                | 172,761           |
| PCLXL (PCL6)        | 305,708           |
| PostScript          | 351,542           |
| PDF from PostScript | 74,128            |

Converted via printer drivers from the original PCLXL (PCL6) file via filter:

|                                   |            |
|-----------------------------------|------------|
| Original PCLXL (PCL6)             | 305,708    |
| to Canon iP100 ink jet            | 3,620,241  |
| to PCL                            | 5,599,651  |
| to PostScript                     | 10,074,461 |
| to PDF from PostScript from PCLXL | 142,213    |
| to PCLXL                          | 632,033    |

[Top](#)

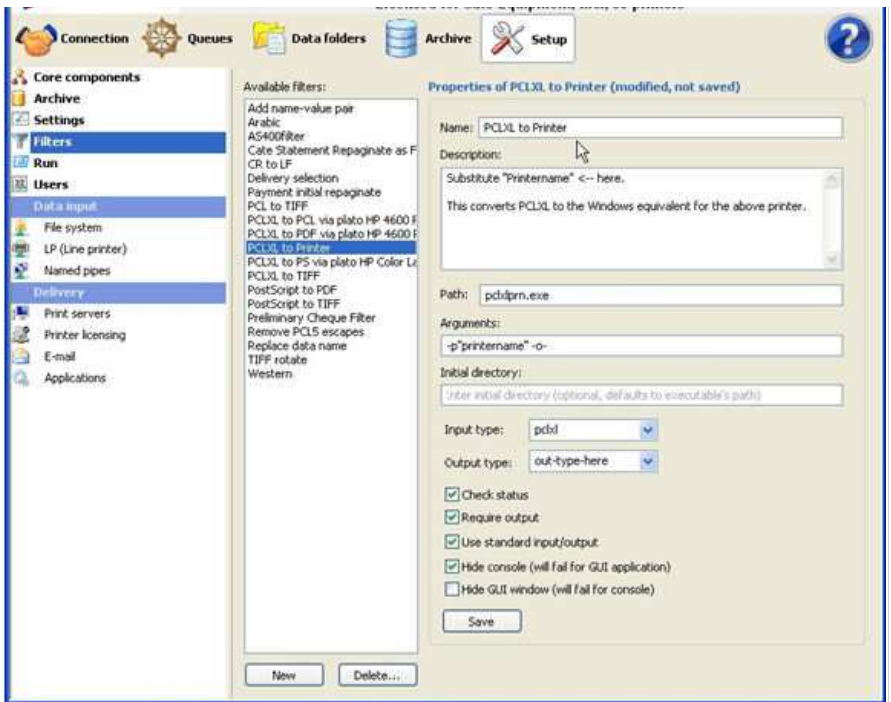
##### Setup

Filters are required to print to other windows printers from PCLXL (PCL6). Please set up individual filters for each printer you wish to use. PostScript output can also be set up this way (at around 30 times the size, with corresponding processing time).

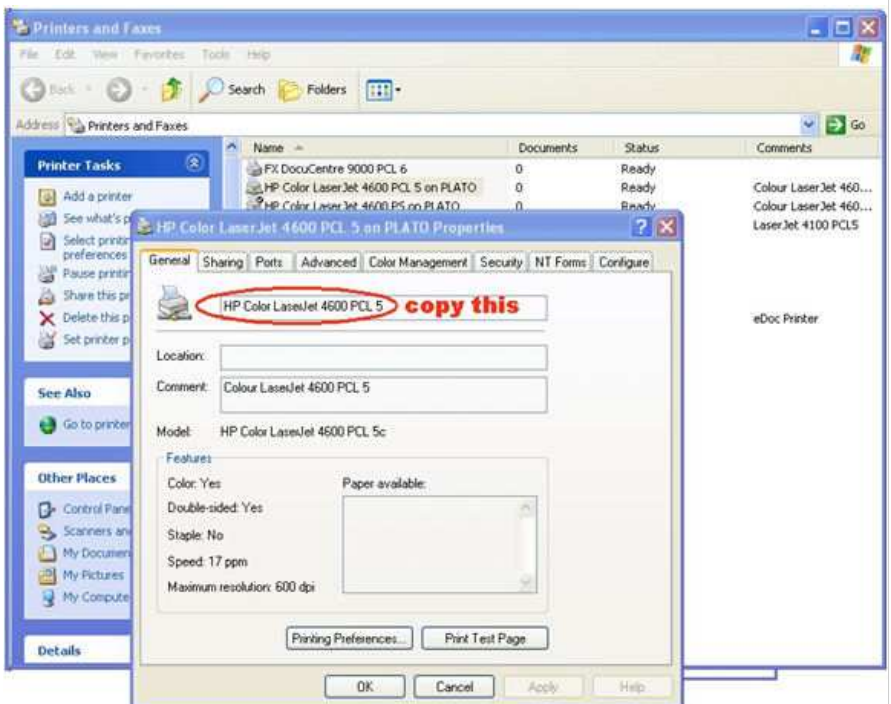
[Top](#)

##### To Define a new Filter

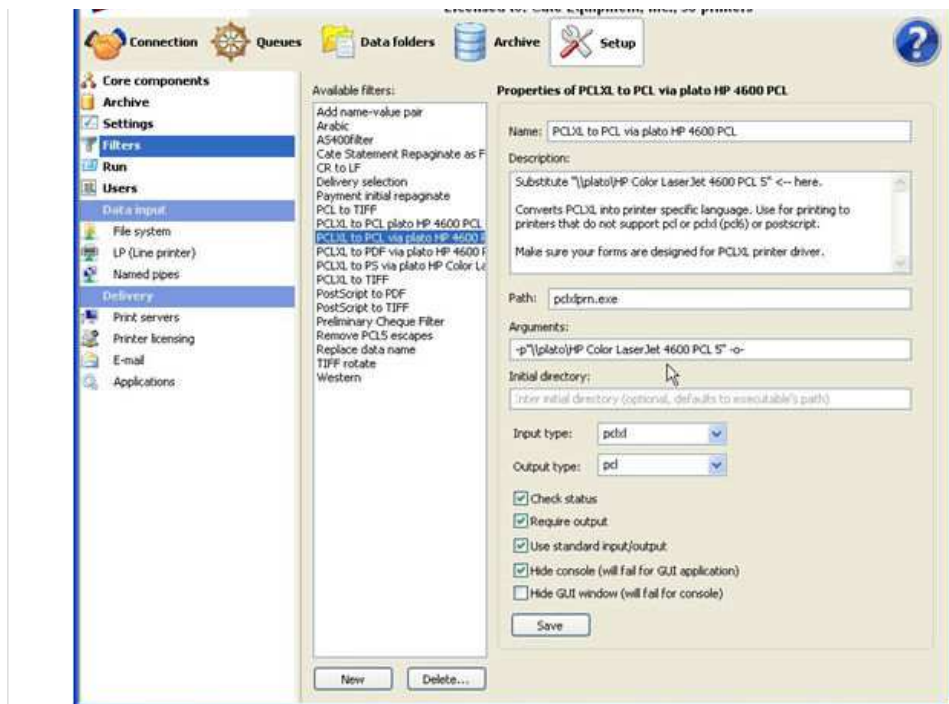
1. Open the Filters tab and use the **PCLXL to Printer** filter as a model.



2. Go to **Start, Printers and Faxes**, select the required printer and go to **Properties**. Select the **printer name** as shown and copy the name.



3. Set up a new Filter. Paste the copied name in place of the **printer name** in **Description** and **Arguments**. If the printer is via a Print Server (**on Plato** in the example), include that into the **printer name**, as **\\server\ (\\ plato \** below).



4. Replace Printer in the **Name** with a modified version with no slashes (and short enough to be able to see all the description). This is the final Filter:
5. Replace **Input type** with **pclxl** and **Output type** with **prn**.
6. Check these under **Output type**:

**Check status**

**Require output**

**Use standard input/output**

**Hide console**

**Hide GUI** should be Unticked

7. **Save** to record this as a new filter.

You can set up as many different filters as there are printers you want to print to.

[Top](#)

To print to any Windows Printer

Your queue must have a PCLXL (PCL6) Data Folder selected, PCLXL is represented as this symbol: 

**In the Print tab:**

Select the printer from the list and select the corresponding **Filter** from the list. **Apply** to finish.

[Top](#)

[Disclaimer](#) | [Home](#) | [About Us](#) | [News](#) | [Products](#) | [Customers](#) | [Free Trial](#) | [Contact Us](#) | [Success Stories](#)

Copyright 1995-2011 TCG Information Systems Pty. Ltd. All rights reserved.