



## Enterprise Manual V7.5

[Connection](#) | 
 [Queues](#) | 
 [Data Folders](#) | 
 [Archive](#) | 
 [Setup](#) | 
 [Submit](#)  
[Associated Files](#) | 
 **Other Add-ons** | 
 [Related Batch Processes](#) | 
 [Special Forms](#)

### Other Add-ons

- ▶ [Prodocom Fax](#)
- ▶ [Replace Filter](#)

#### Replace Filter in FTSpooler

**Note:** This software is supplied with three months warranty, with no ongoing support or charges. It is designed for single-byte encoding systems only.

##### Introduction

This filter is used to modify FormTrap input or output. Data to change is recognised by a character string, with optional replacement of that character string. To delete, use " " as the empty replace string.

[Top](#)

##### Components

There are two components to the filter:

1. **replace.exe** - the executable program
2. **replace.ini** - stores character sequences to be identified and replaced and must be in the same directory as the program.

Both are normally in the same %ftinst% folder.

[Top](#)

##### Format of replace.ini

**replace.ini** is built in sections. Sections are set up in the following format:

```
[section]
"old_string" "new_string" all/first
```

##### Where

- **section** is a name to identify this operation;
- **"old string"** is the string to be replaced;
- **"new string"** is the replacement; and
- **<all/first>**; defines whether the replacement should occur on only the first instance or all instances of the string in the file.

For example, a section to select output bin 2, normal on the HP 9040 with the optional HP Q5693A 8-bin mailbox is shown below:

```
[OutputBin2Normal]
"@PJL COMMENT" "@PJL SET OUTBIN=OPTIONALOUTBIN2\0D\0A@PJL SET
FINISH=NONE\0D\0A@PJL COMMENT" First          (all on one line)
```

**Special Characters:** Unprintable characters (eg. escape, form feed) are represented by using a backslash "\" character followed by the ASCII representation of the character in hexadecimal format. For example, the escape character is represented as "\1b" - any case for characters a-f (A-F).

Multiple "old string" "new string" "all/first" lines may be provided and are inspected in the order given. Already processed replacement strings are NOT reinspected.

[Top](#)

##### Usage - Command Line

Command line is the norm for Unix/Linux and may be used for Windows outside of the normal Spooler procedure. You can use "replace" on any file, outside of FormTrap. The filter takes three parameters:

```
input file
output file
section name.
```

For example:

```
replace "c:\files\input.pcl" "c:\formtrap\output.pcl" short
```

[Top](#)

Installation within Spooler V7 via Setup

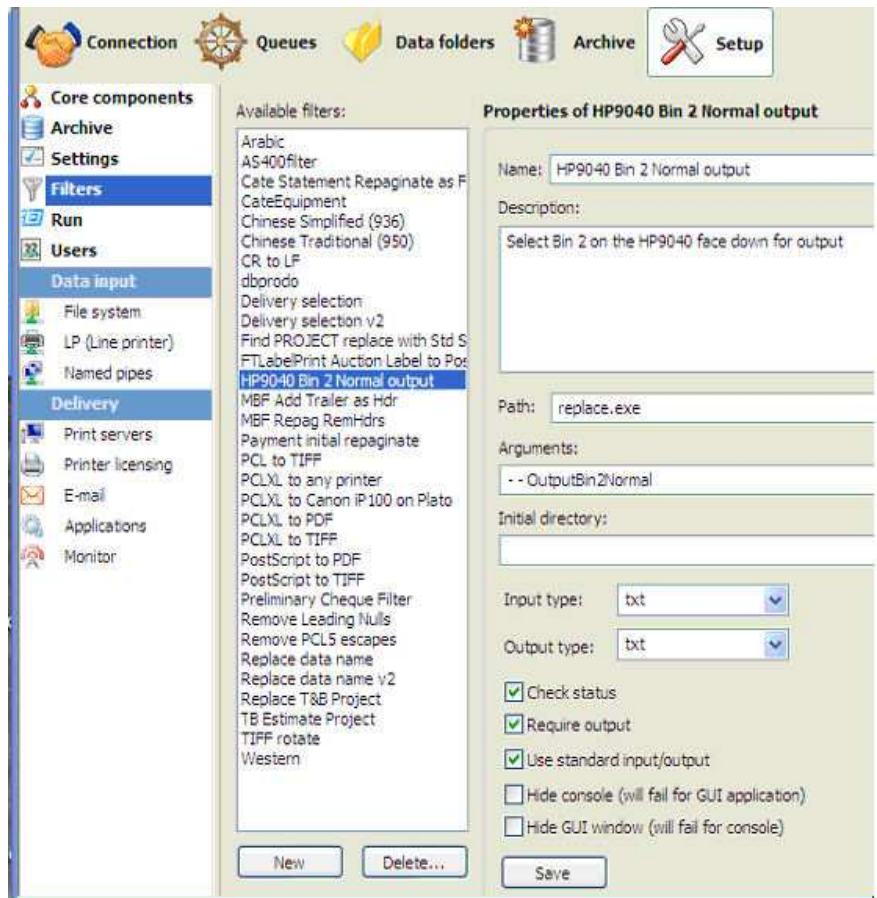
(normally to drive special features of laser printers).

### Version 7 Installation, SBE and Enterprise:

Copy **replace.exe** and **replace.ini** to the %ftinst% folder.

Define each different required **Section** in **Setup, Filters** (see the manual page via F1 and below) and invoke via **Queues, Filters** tab.

This is the Setup Filters screen for the filter to output to Bin 2, Normal for the HP 9040 with HP Q5693A 8-bin mailbox attached.



[Top](#)

[Disclaimer](#) | [Home](#) | [About Us](#) | [News](#) | [Products](#) | [Customers](#) | [Free Trial](#) | [Contact Us](#) | [Success Stories](#)

Copyright © 1995-2011 TCG Information Systems Pty. Ltd. All rights reserved.